

CREATE
YOUR STYLE
with SWAROVSKI ELEMENTS



DESIGN PROJECT
MOTHER'S DAY
NECKLACE
"VIBRANT HEARTS"

MOTHER'S DAY NECKLACE "VIBRANT HEARTS"



SWAROVSKI ELEMENTS

Article	Product Group	Article No.	Amount	Size	Color	Color Code
	Pendants	6261	1 pc.	36 mm	Crystal Red Magma	001 REDM
	Pendants	6262	1 pc.	26 mm	Crystal Satin	001 SAT
	Pendants	6264	1 pc.	18 mm	Crystal Astral Pink	001 API

Supplies & Tools

Supplies

- Chain, silver, 95cm
- 11x Jump ring, silver, Ø 4 mm
- 2x Jump ring, silver, Ø 6 mm
- 1x Lobster clasp, silver
- Wire, silver, Ø 1 mm, 10cm

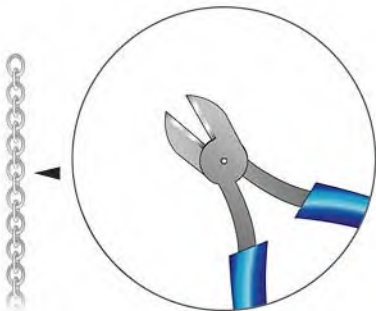
Tools

- Flat nose pliers
- Pencil
- Side cutter

Level of design: INTERMEDIATE

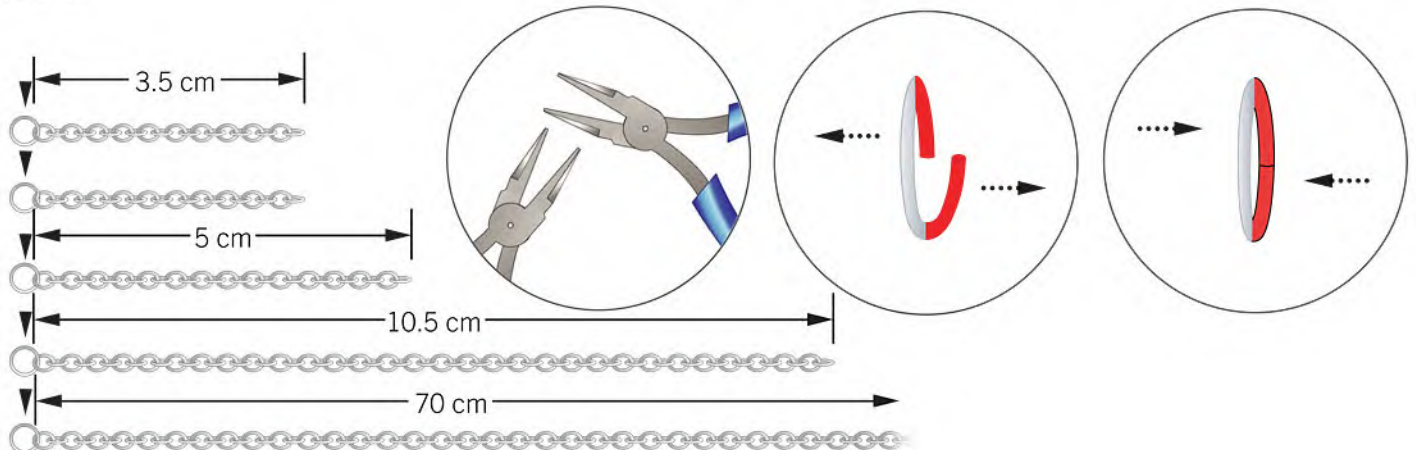
Have also a look at the **text instruction** at the last page!

STEP 1

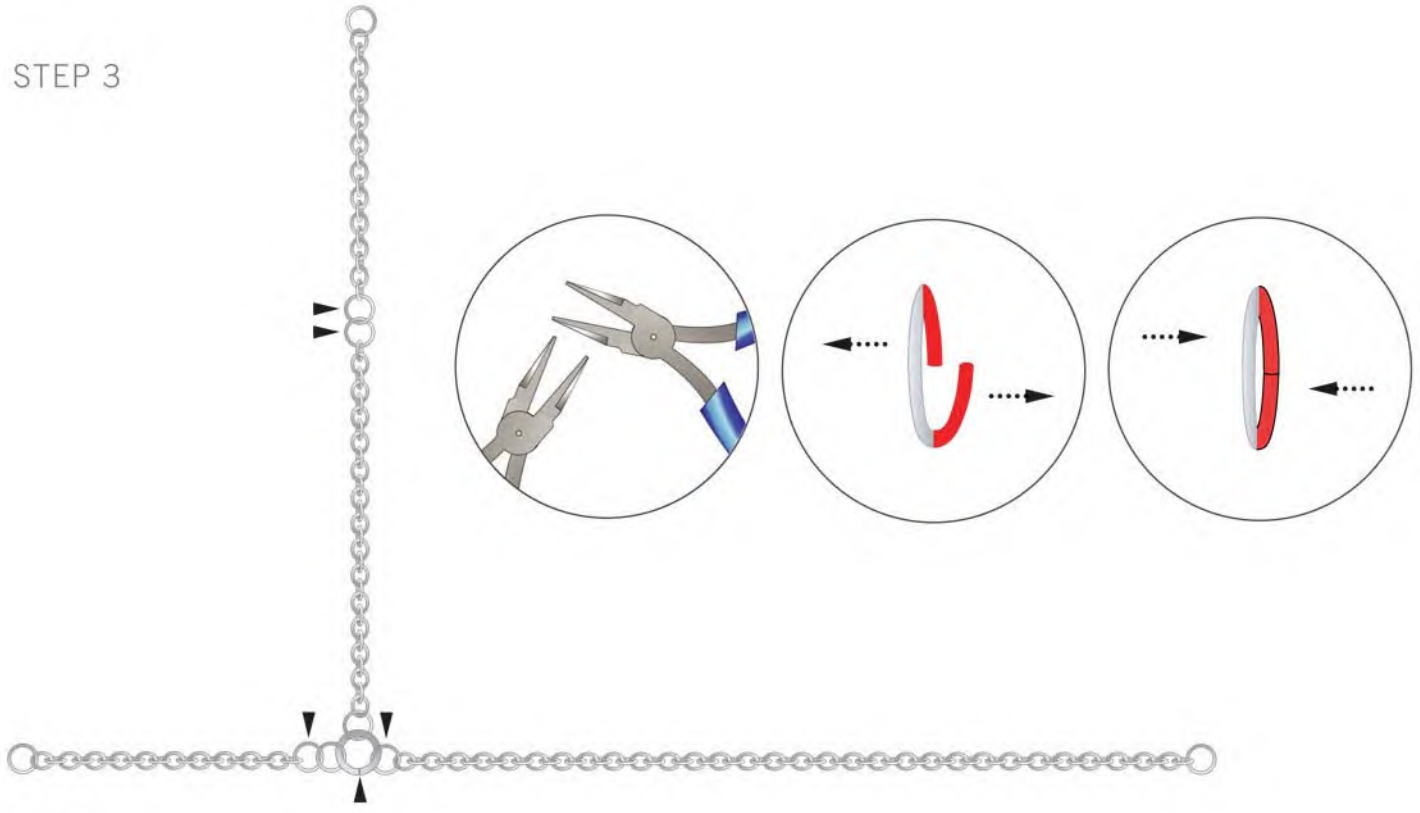


3.5 cm x2
5 cm x1
10.5 cm x1
70 cm x1

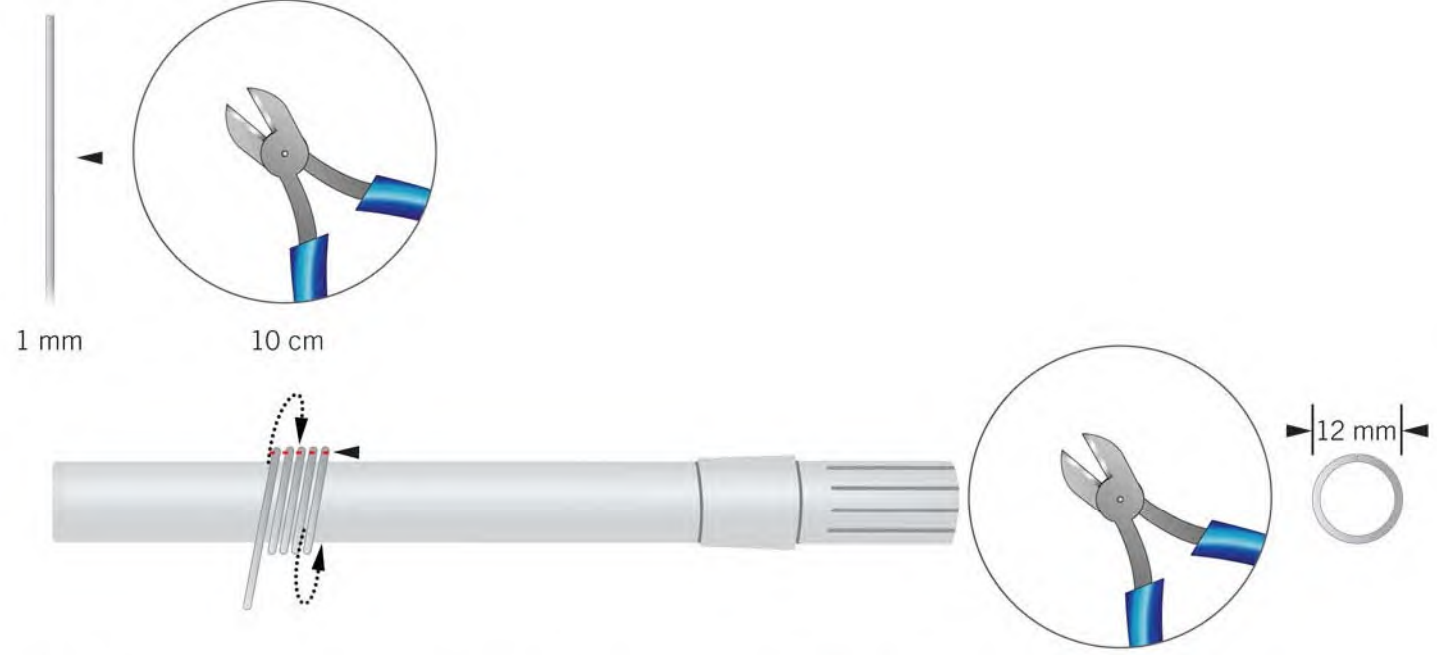
STEP 2



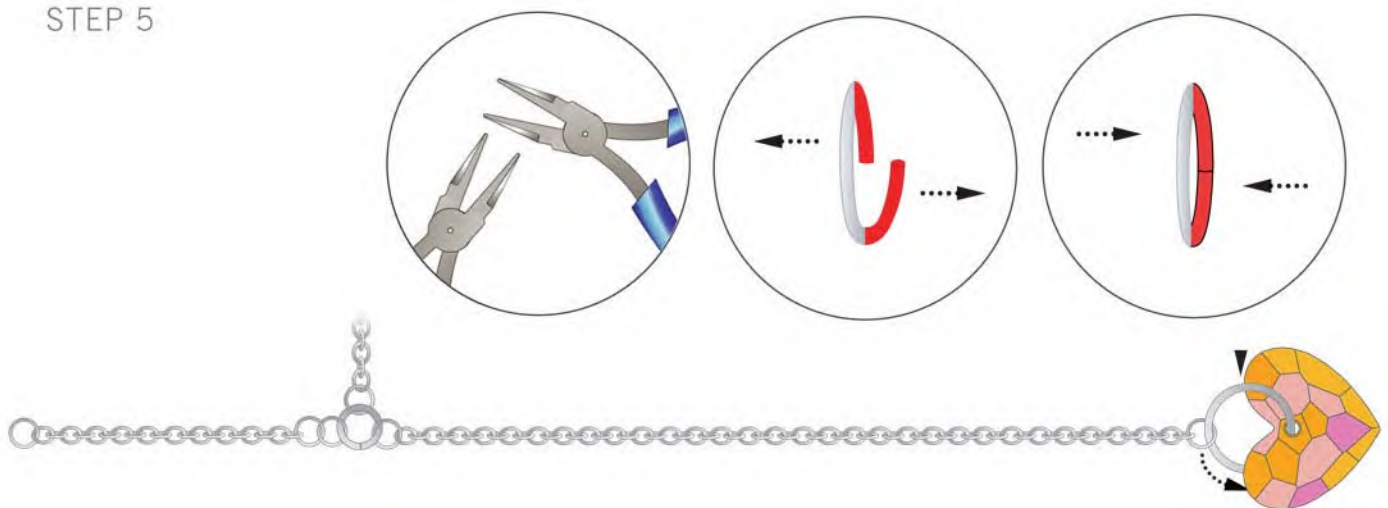
STEP 3



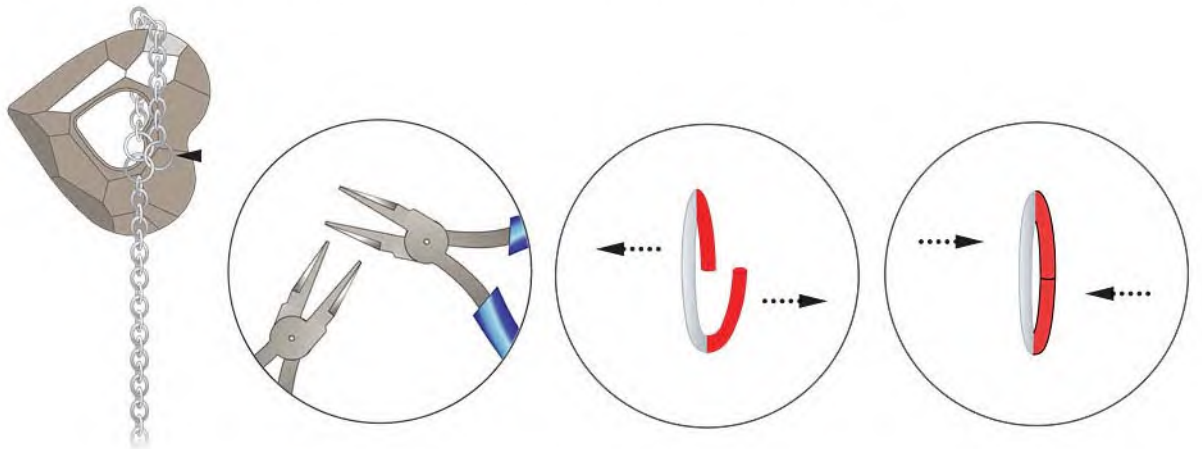
STEP 4



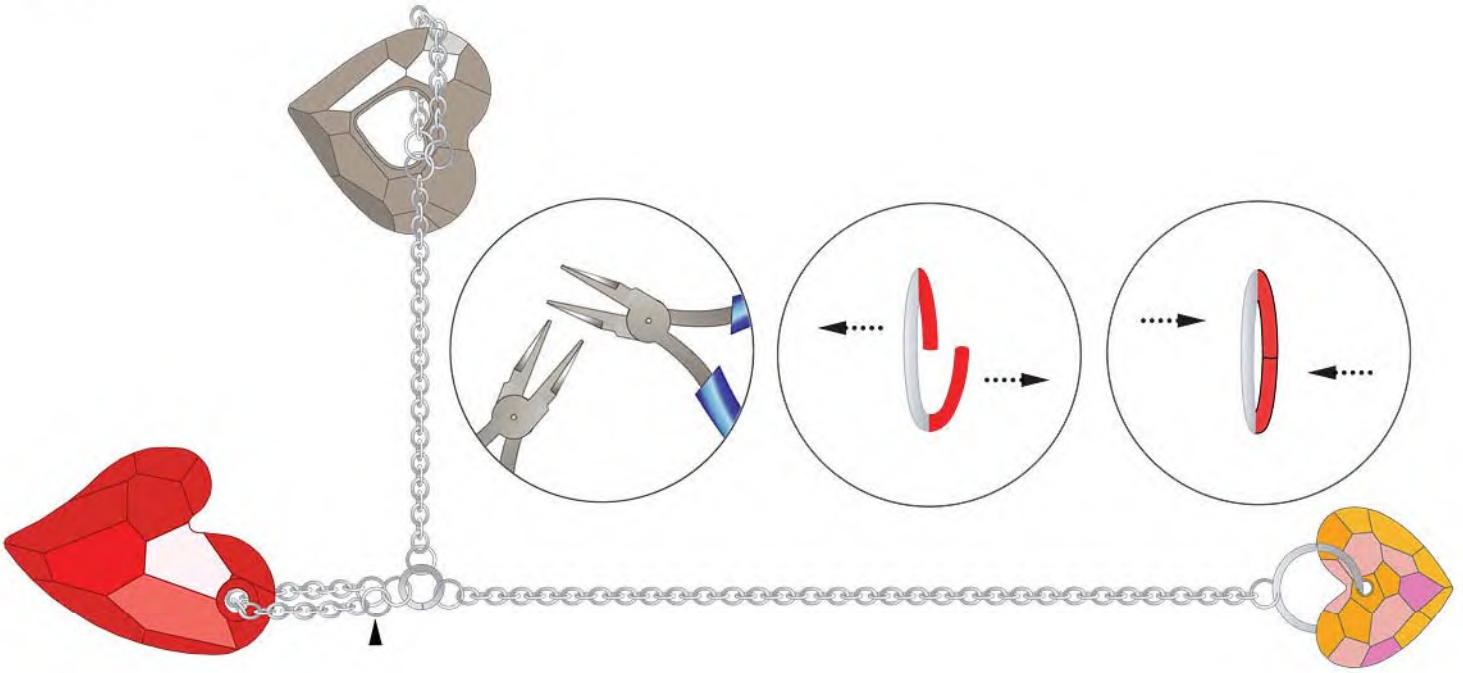
STEP 5



STEP 6



STEP 7



STEP 8



MOTHER'S DAY NECKLACE "VIBRANT HEARTS"



- STEP 1: Cut a chain into two pieces of 3.5cm, one piece of 5cm, one of 10.5cm and one of 70cm.
- STEP 2: Attach one 4mm jump ring to each piece of chain as shown in the illustrations.
- STEP 3: Connect the 3.5cm chain with the 5cm chain with a 4mm jump ring on each end as shown. Attach two more 4mm jump rings to the other 3.5cm chain and then to a 6mm jump ring. Also attach the 10cm chain with a 4mm jump ring and insert into the 6mm jump ring as well.
- STEP 4: Cut a 10cm piece of 1mm gauge wire and wind it around a pen or pencil of approximately 10mm thickness. Cut through this spiral to get a 12mm jump rings as shown in the illustrations.
- STEP 5: Using one of the 12mm jump rings attach the Swarovski Heart Pendant article 6264 18mm Crystal Astral Pink to the chain.



STEP 6:

Insert the Swarovski Heart Pendant article 6262 26mm Crystal Satin through the upper end of the chain. Form the chain into a loop around the inside of the heart and connect this end to the 4mm jump ring. Insert the Swarovski Heart Pendant article 6261 36mm Crystal Red Magma onto the chain.

STEP 7:

Form a loop with this chain end and connect it to the other 4mm jump ring using flat nose pliers as shown.

STEP 8:

Attach the lobster clasp to the 70cm silver chain using a 4mm jump ring and insert this chain through the 6mm jump ring that is connecting the three chains with the heart pendants. Attach a 4mm jump ring to the other end of the 70cm chain and then attach a 6mm jump ring to the 4mm jump ring.