

CREATE
YOUR STYLE
with SWAROVSKI ELEMENTS

DESIGN PROJECT

MOTHER'S DAY
BRACELET
"DAZZLING HEARTS"



MOTHER'S DAY BRACELET "DAZZLING HEARTS"



SWAROVSKI ELEMENTS

Supplies & Tools

Article	Product Group	Article No.	Amount	Size	Color	Color Code
	Pendants	6262	1 pc.	17 mm	Crystal	001
	Pendants	6262	1 pc.	17 mm	Crystal Satin	001 SAT
	Pendants	6262	1 pc.	26 mm	Crystal AB	001 AB
	Pendants	6264	1 pc.	18 mm	Crystal AB	001 AB
	Pendants	6264	1 pc.	18 mm	Crystal Satin	001 SAT

Supplies

Chain, silver, 18 cm
 5x Jump ring, silver, Ø 5 mm
 2x Jump ring, silver, Ø 6 mm
 1x Jump ring, silver, Ø 18 mm
 1x Toggle clasp, silver
 Wire, silver, Ø 1 mm, 25 cm

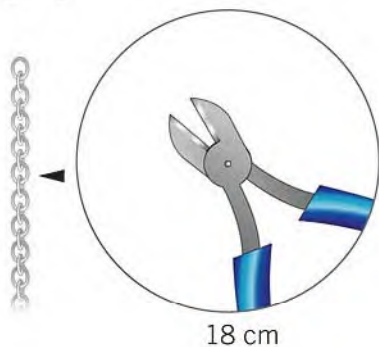
Tools

Flat nose pliers
 Pencil
 Side cutter

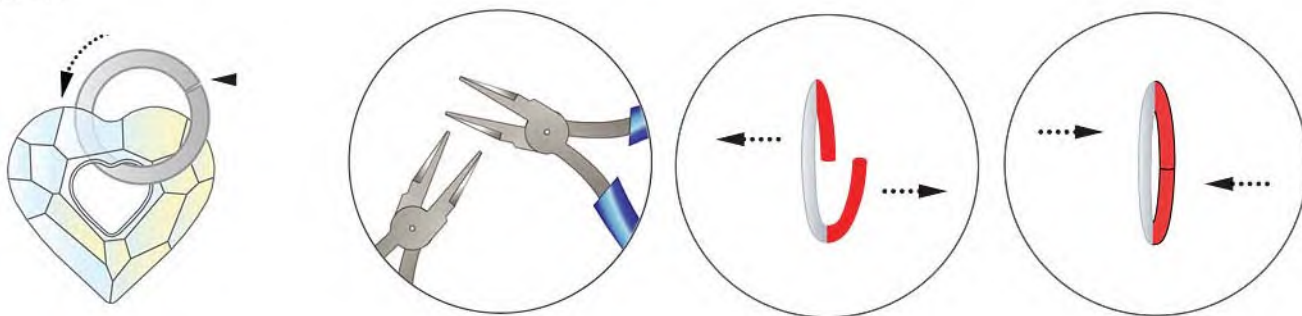
Level of design: INTERMEDIATE

Have also a look at the **text instruction** at the last page!

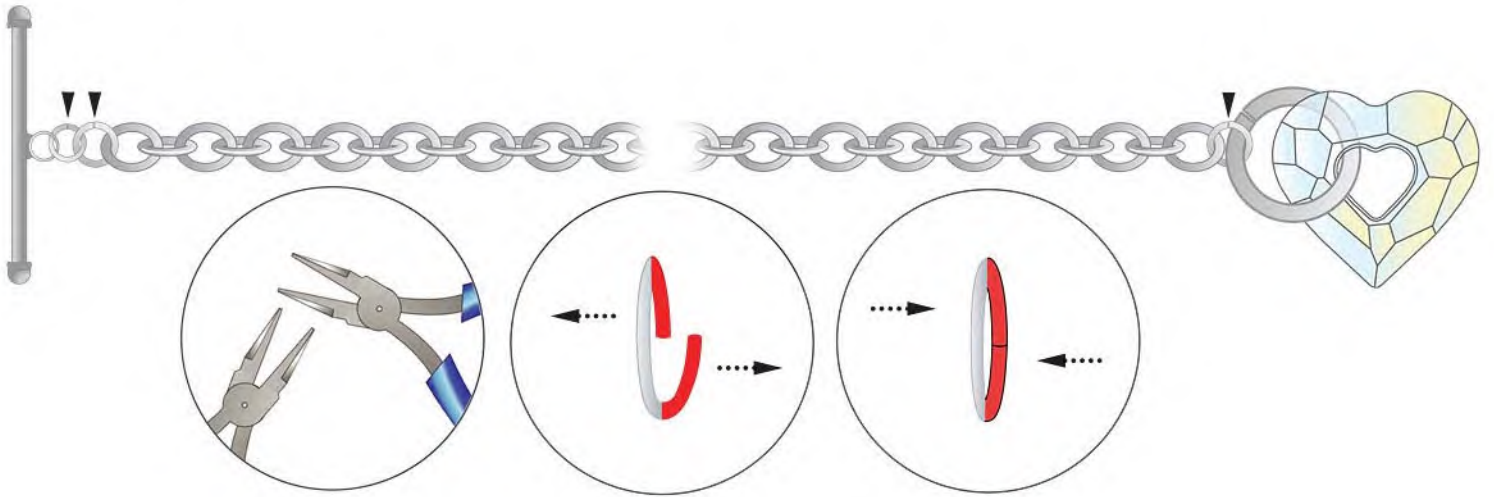
STEP 1



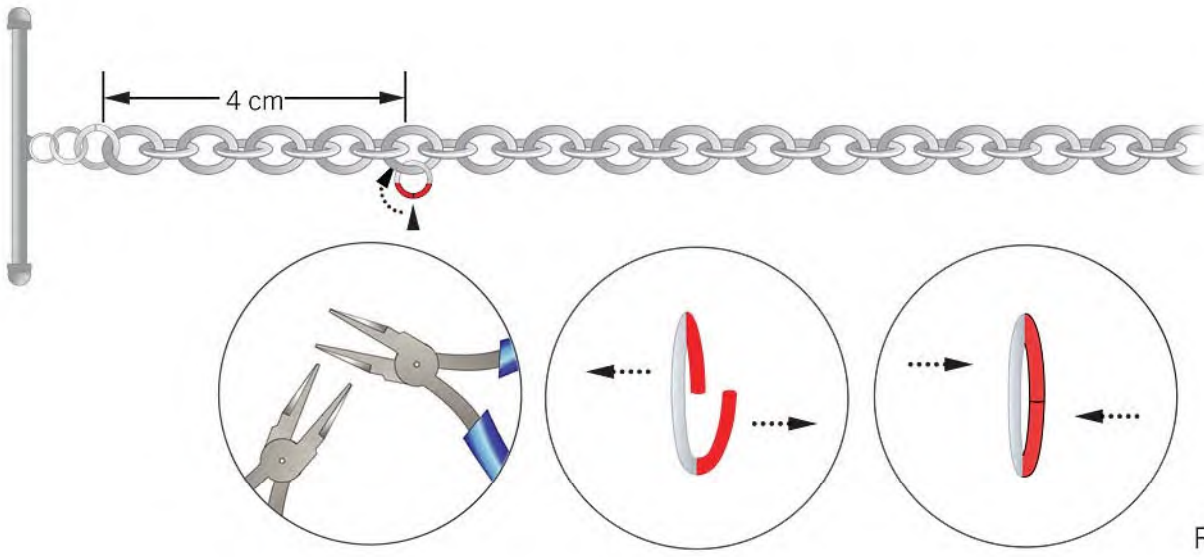
STEP 2



STEP 3

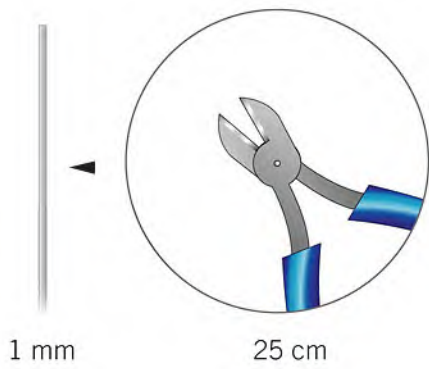


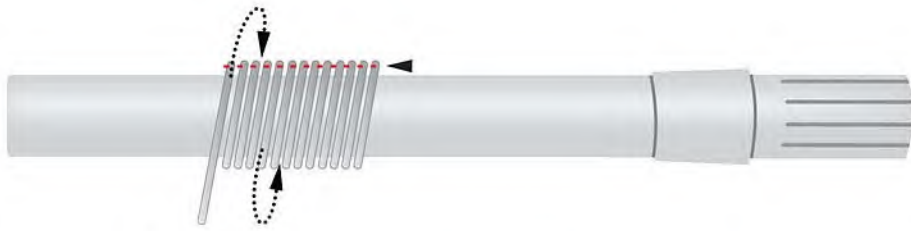
STEP 4



Repeat step x3

STEP 5

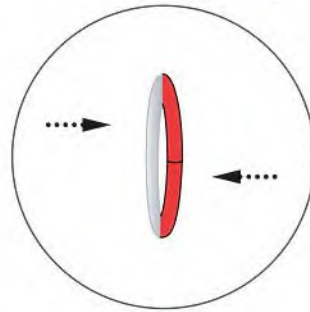
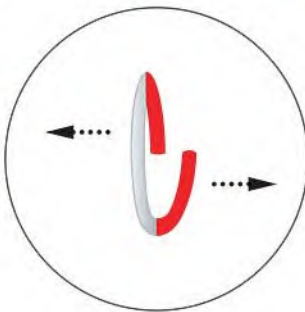
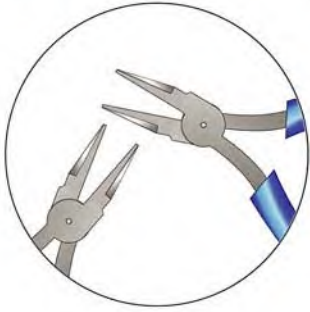
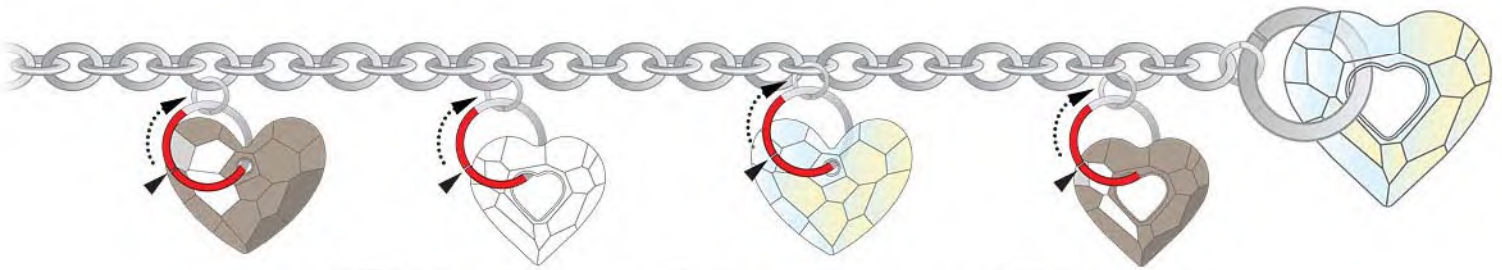




12 mm



STEP 6



MOTHER'S DAY BRACELET "DAZZLING HEARTS"



- STEP 1: Cut a chain to 18cm length.
- STEP 2: Attach the Swarovski Heart Pendant art. 6262 26mm Crystal AB to an 18mm jump ring using flat nose pliers.
- STEP 3: Connect the 18mm jump ring to the chain using a 6mm jump. Attach a toggle clasp with a 5mm and 6mm jump ring to the other end of the chain as depicted in the illustrations.
- STEP 4: Attach four 5mm jump rings every 4cm of the chain using flat nose pliers.
- STEP 5: Cut 25cm of 1mm gauge wire and wrap it around a pen or a pencil of approximately 10mm diameter. Cut through the spiral to get jump rings of 12mm diameter.
- STEP 6: Attach the following Heart Pendants from the SWAROVSKI ELEMENTS assortment onto the 12mm jump rings and onto the 5mm jump rings attached to the chain in step 4: article 6264 18mm Crystal Satin, 6262 17mm Crystal, 6264 18mm Crystal AB and 6262 17mm Crystal Satin.