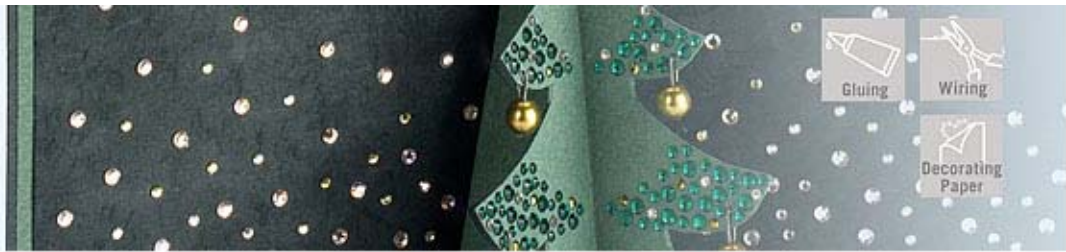


CREATE  
YOUR STYLE with  
CRYSTALLIZED™  
- Swarovski Elements










MAKE YOUR CREATIVITY STICK  
KIRIGAMI CARD  
CHRISTMAS TREE

# KIRIGAMI CARD CHRISTMAS TREE



## CRYSTALLIZED™ – Swarovski Elements

## Supplies & Tools

Article	Product Group	Article No.	Amount	Size	Colour	Colour Code
	Pearl	5810	12 pcs.	6 mm	Crystal Antique Brass Pearl	001 402
	Crystal-it	75011	53 pcs.	SS06	Crystal Dorado	001 DOR
	Crystal-it	75011	110 pcs.	SS06	Crystal Golden Shadow	001 GSHA
	Crystal-it	75011	130 pcs.	SS06	Emerald	205
	Crystal-it	75011	6 pcs.	SS10	Crystal Dorado	001 DOR
	Crystal-it	75011	76 pcs.	SS10	Crystal Golden Shadow	001 GSHA
	Crystal-it	75011	154 pcs.	SS10	Emerald	205

### Supplies

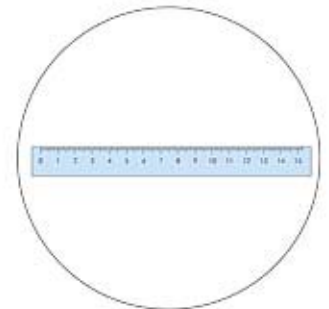
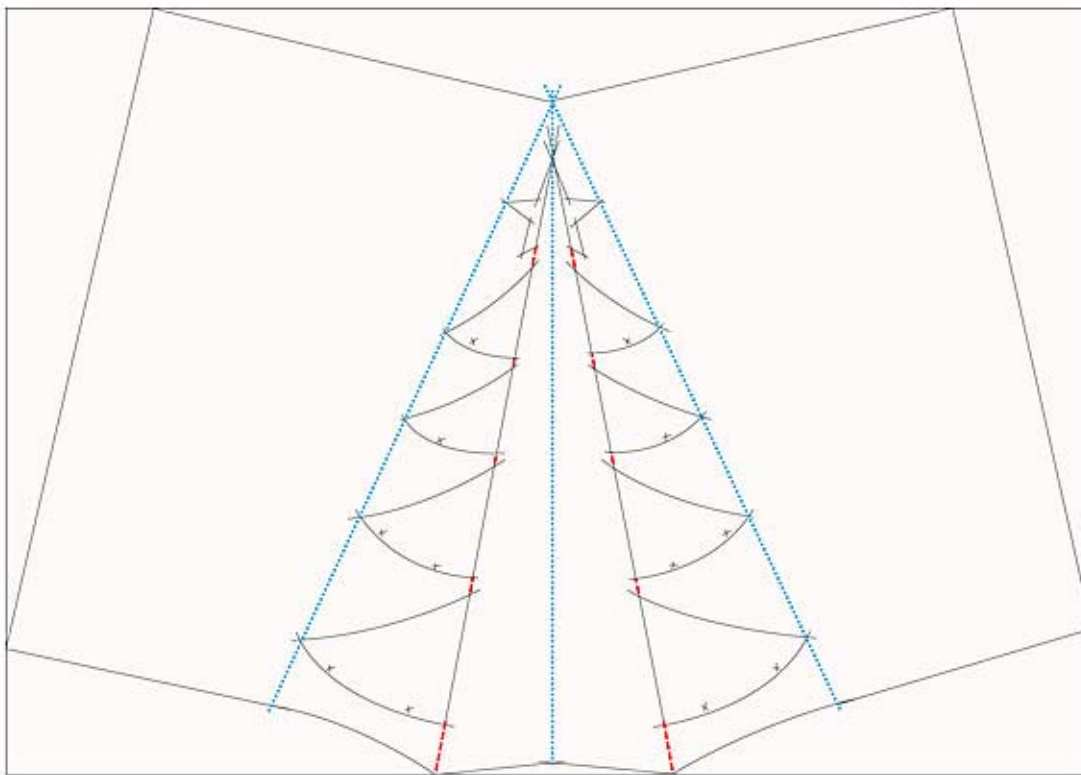
Cardboard, black, DIN A4  
Drawing paper, green, DIN A4  
Paper, black, 21x17 cm  
Steel wire, black,  $\varnothing$  0.7 mm, 42 cm

### Tools

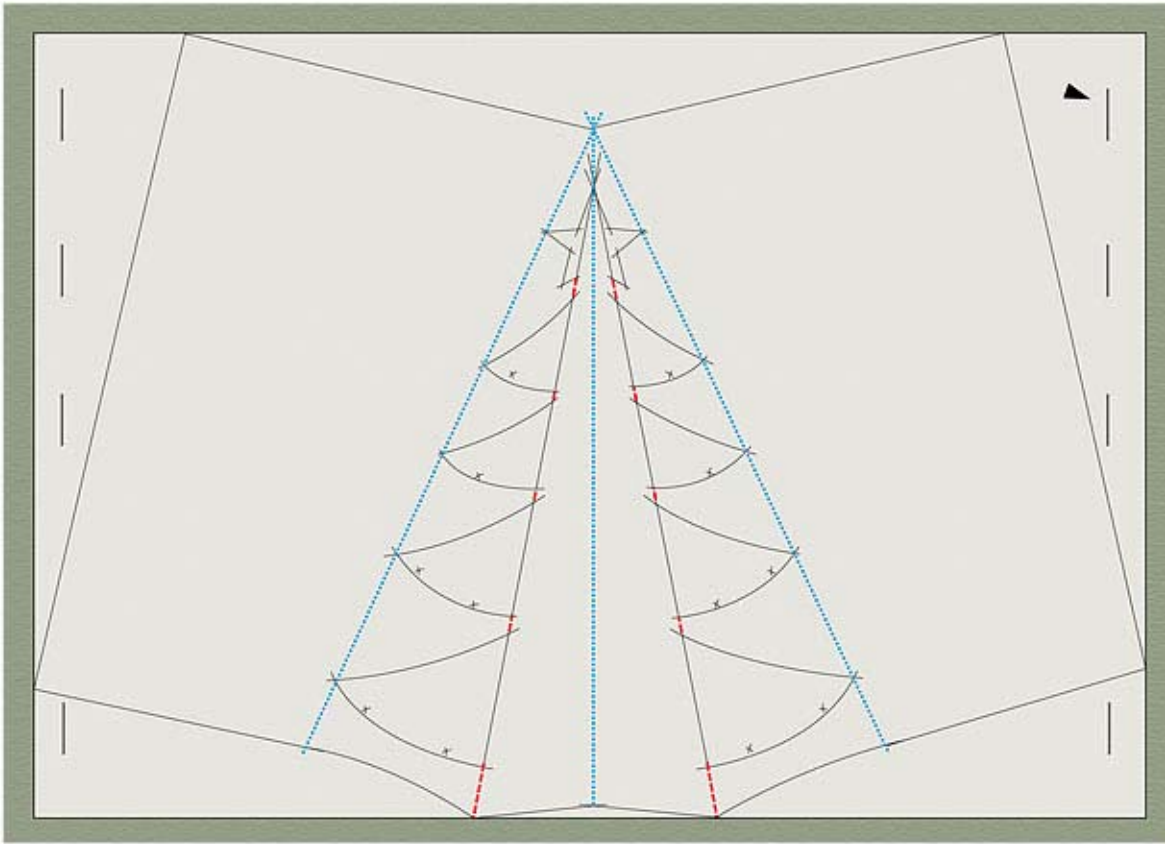
Cutter, Flat nose pliers, Glue, Needle,  
Pencil, Ruler, Scissors, Side cutter,  
Soft mat, Stapler, Transparent paper,  
Tweezers

Level of Design: INTERMEDIATE  
Have a look at the **text instruction** at the last page!

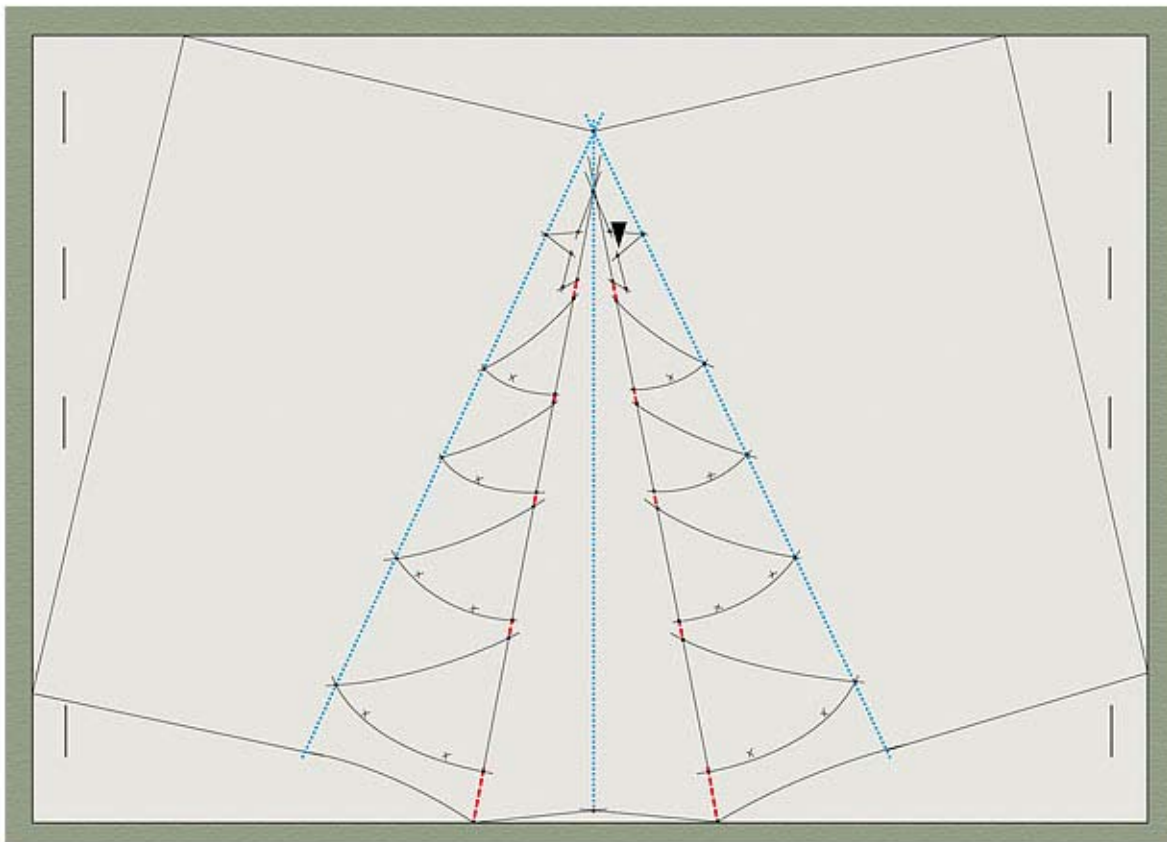
## STEP 1



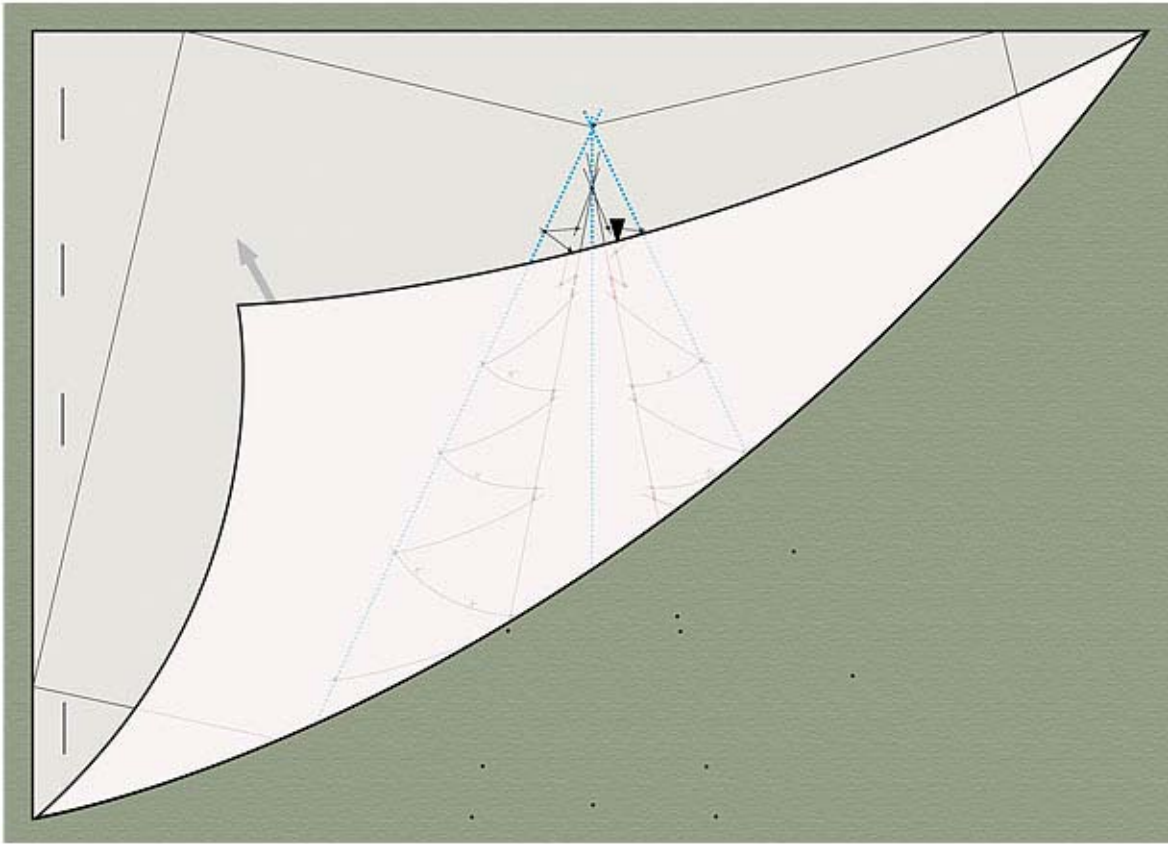
STEP 2



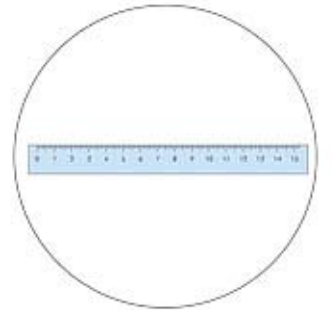
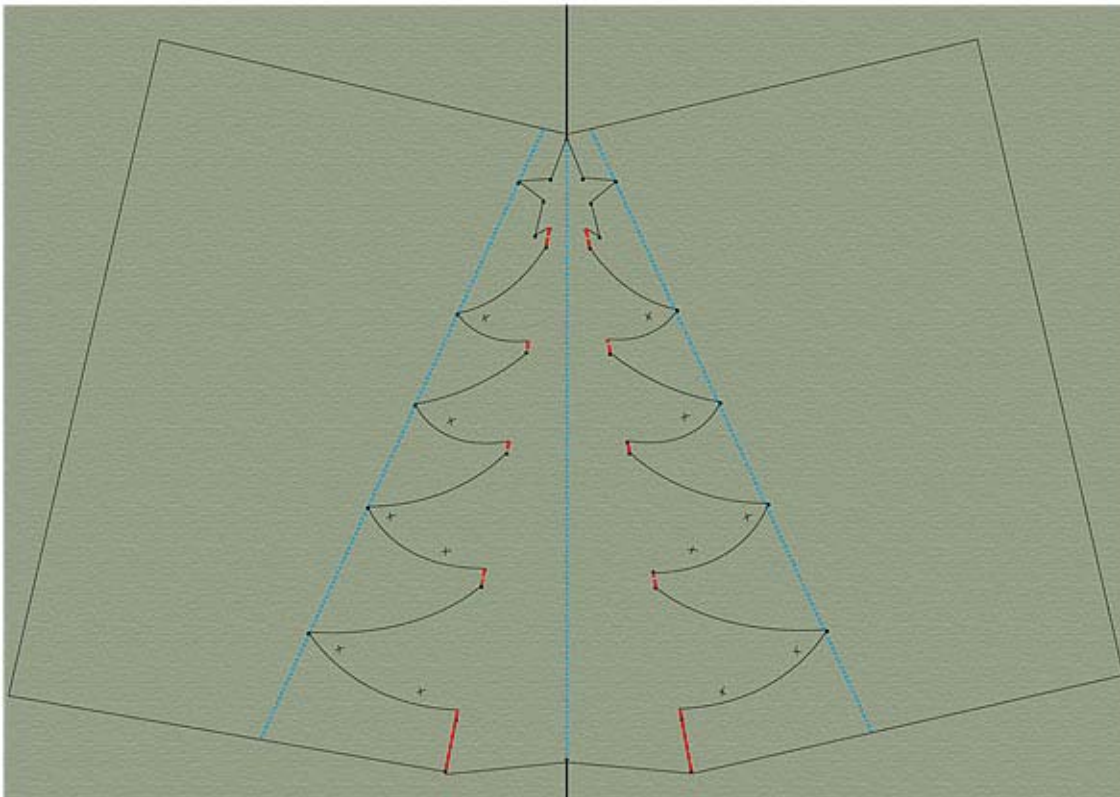
STEP 3

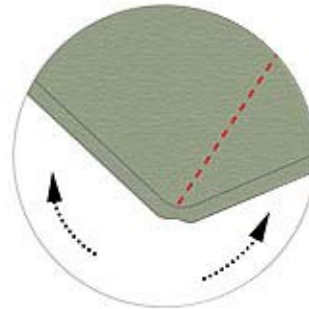
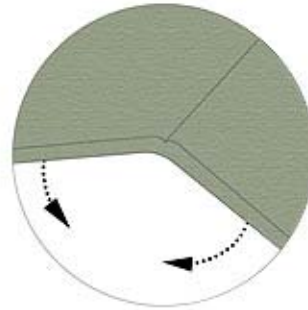
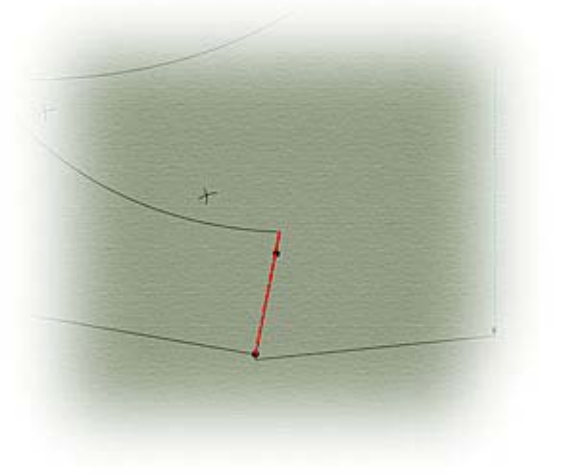
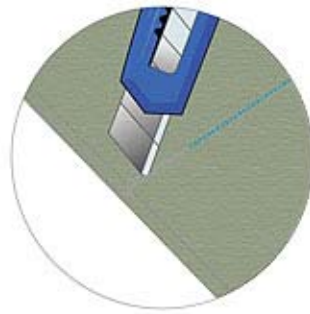
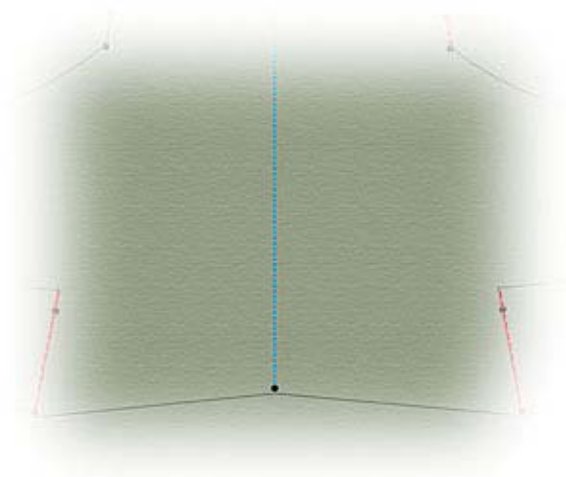


STEP 4

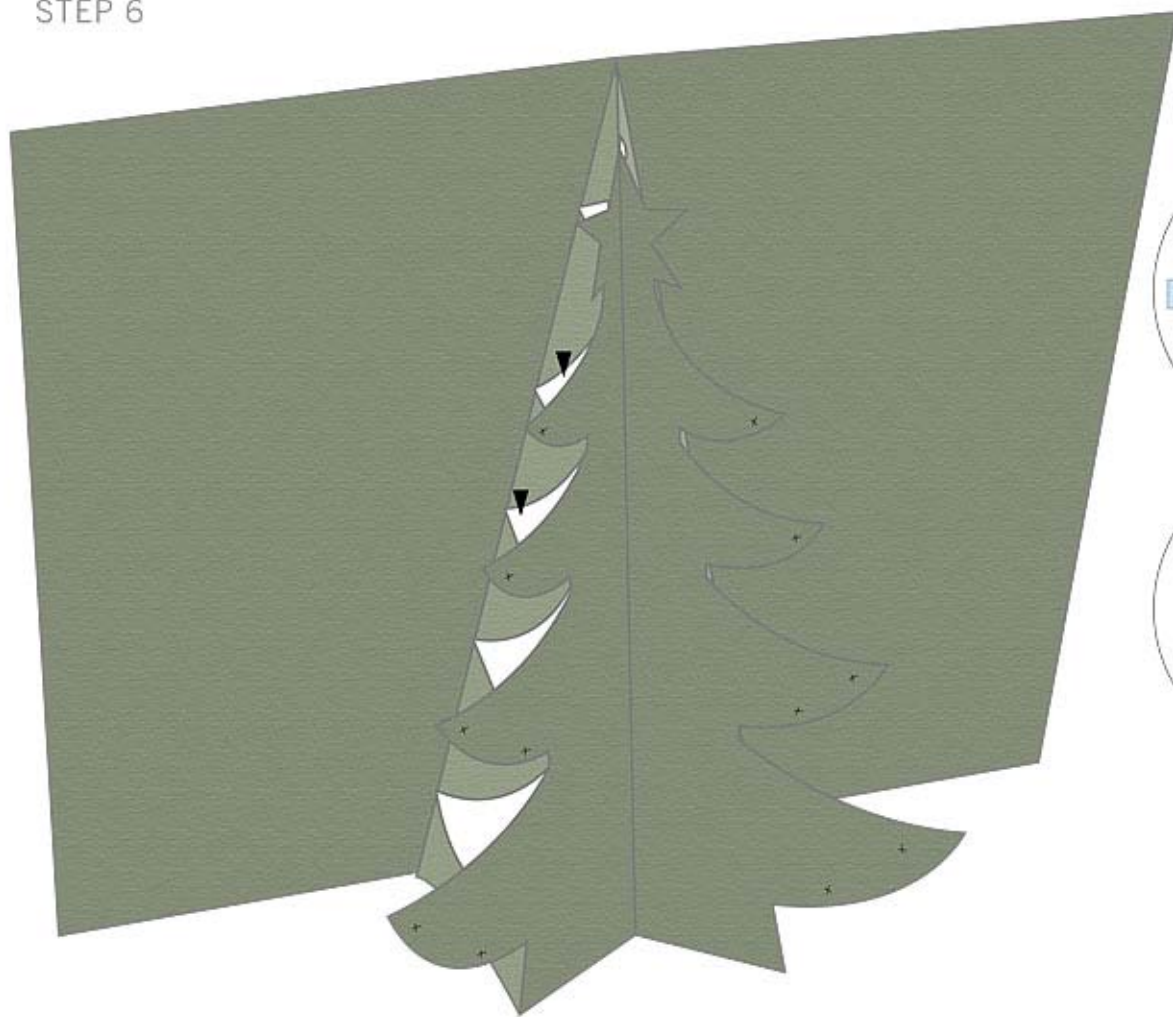


STEP 5

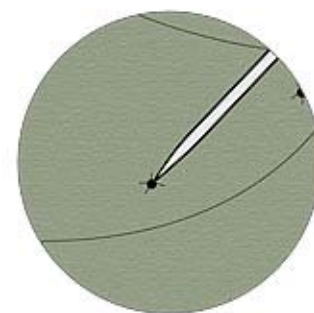
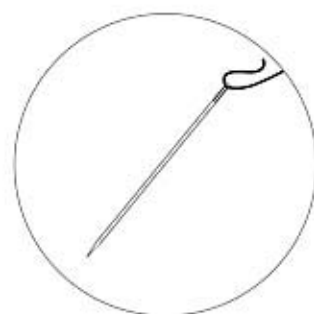
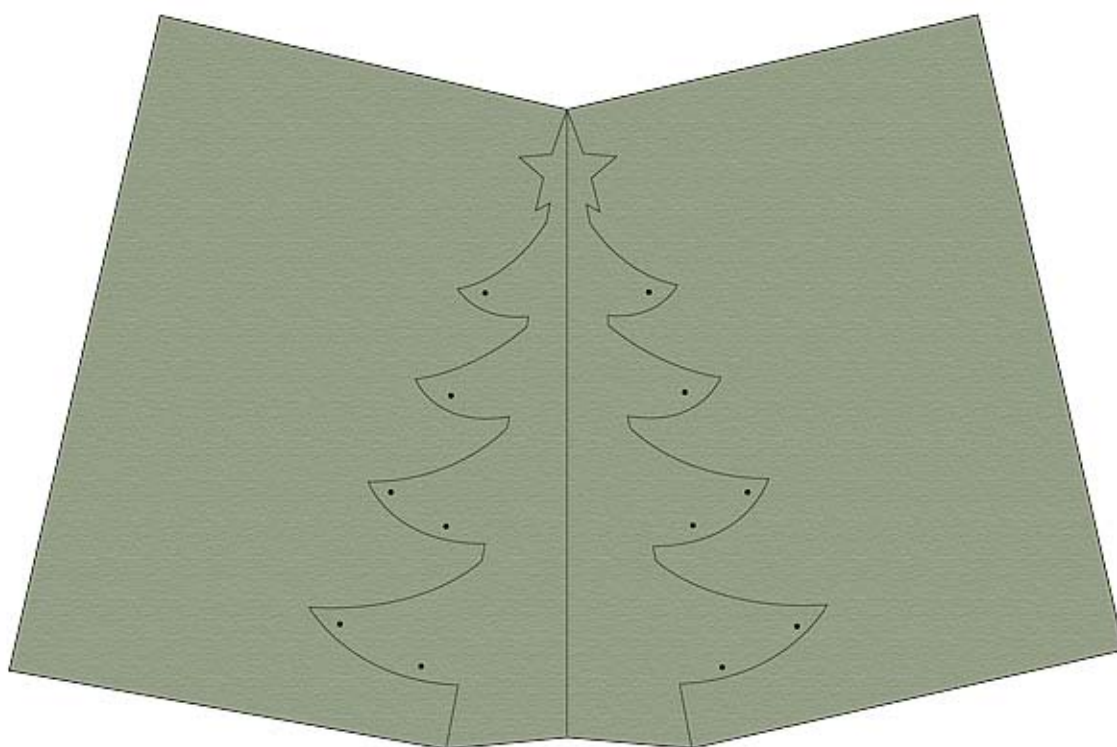




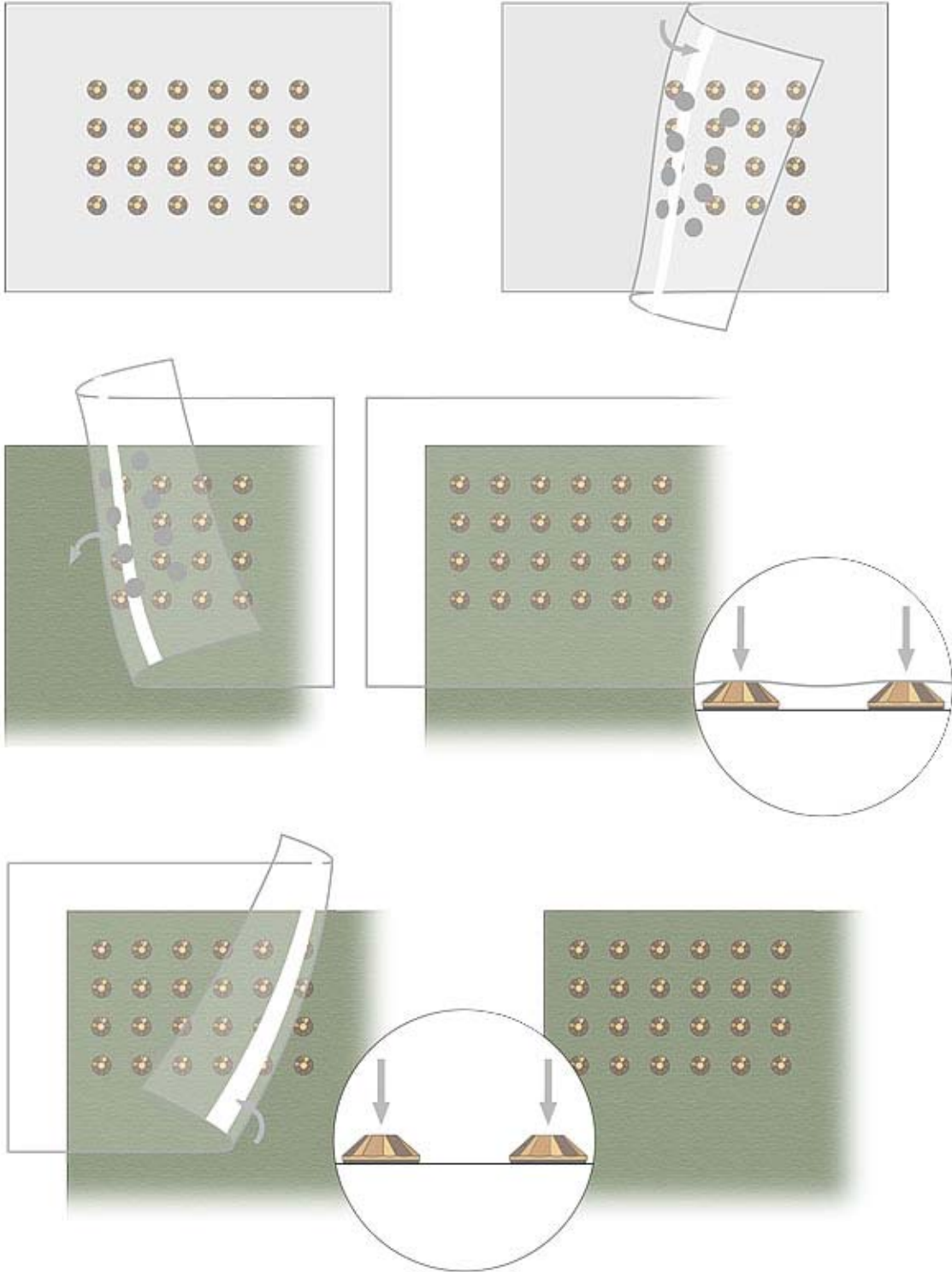
STEP 6



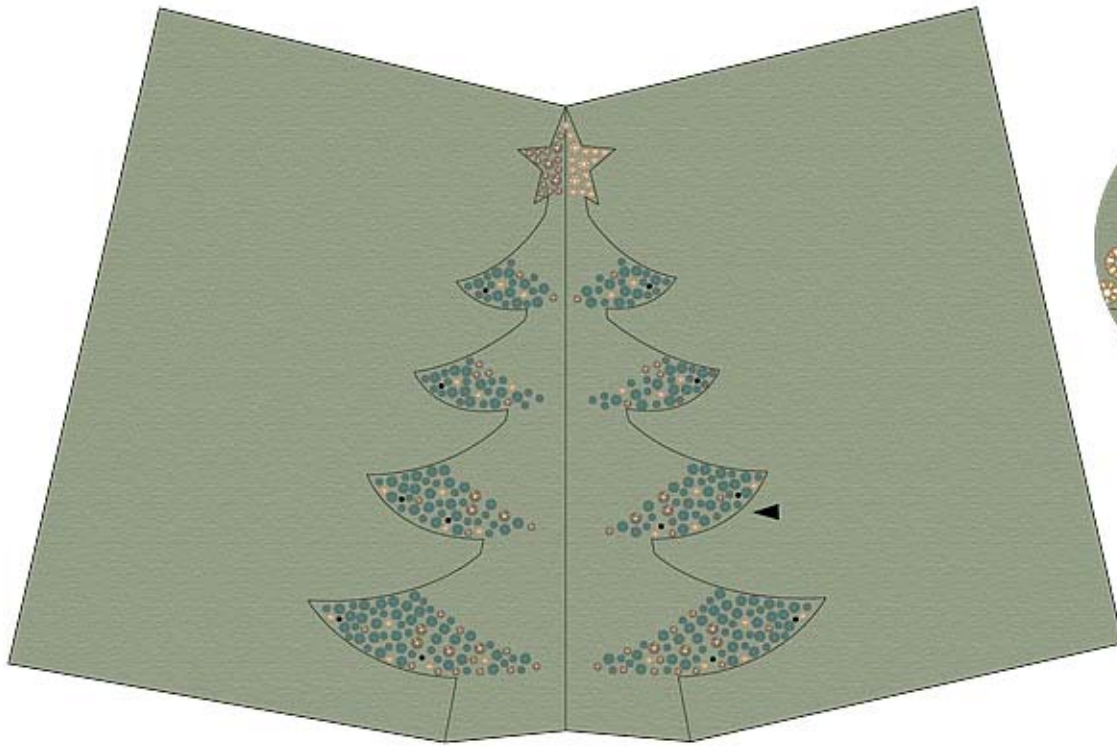
STEP 7



STEP 8

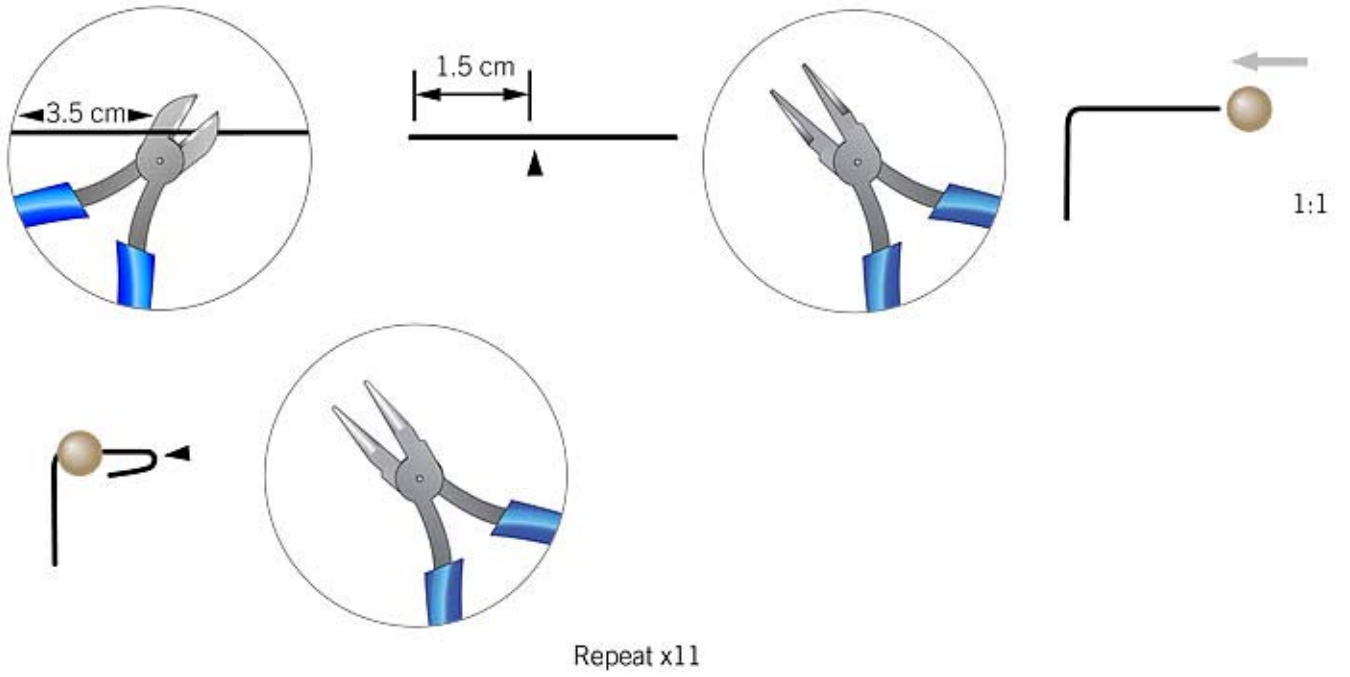


STEP 9

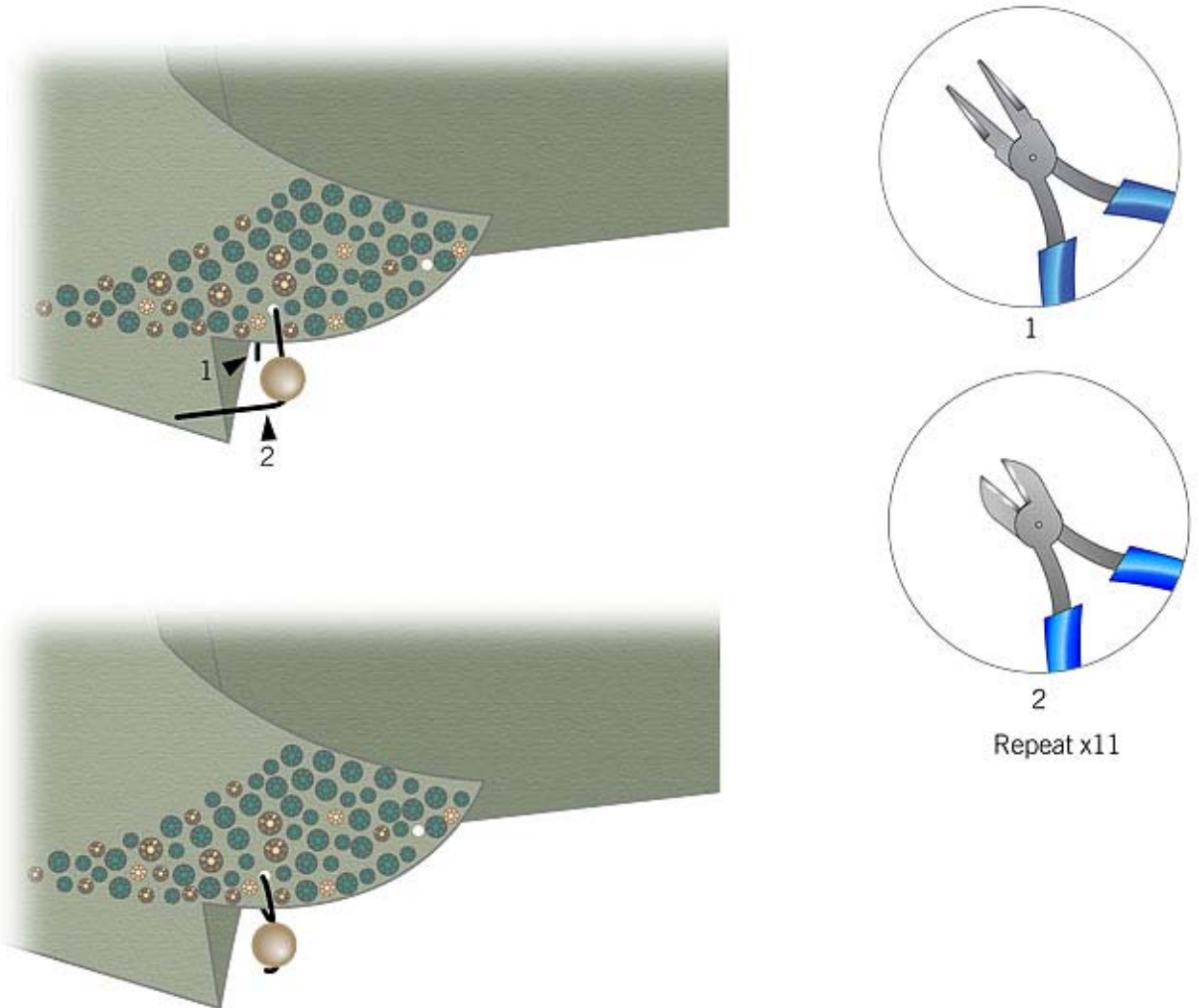




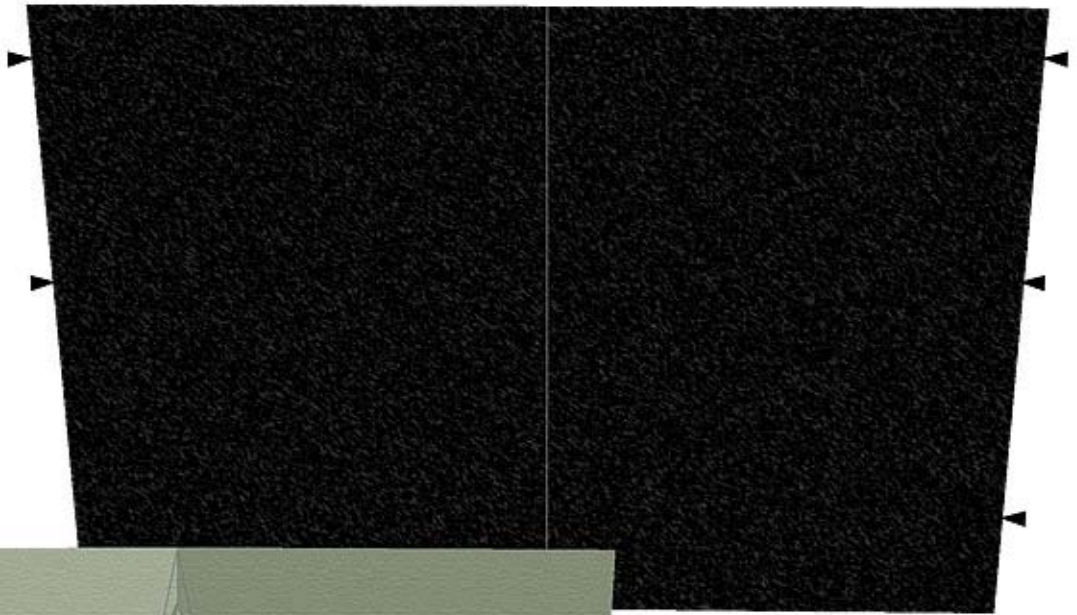
STEP 10



STEP 11



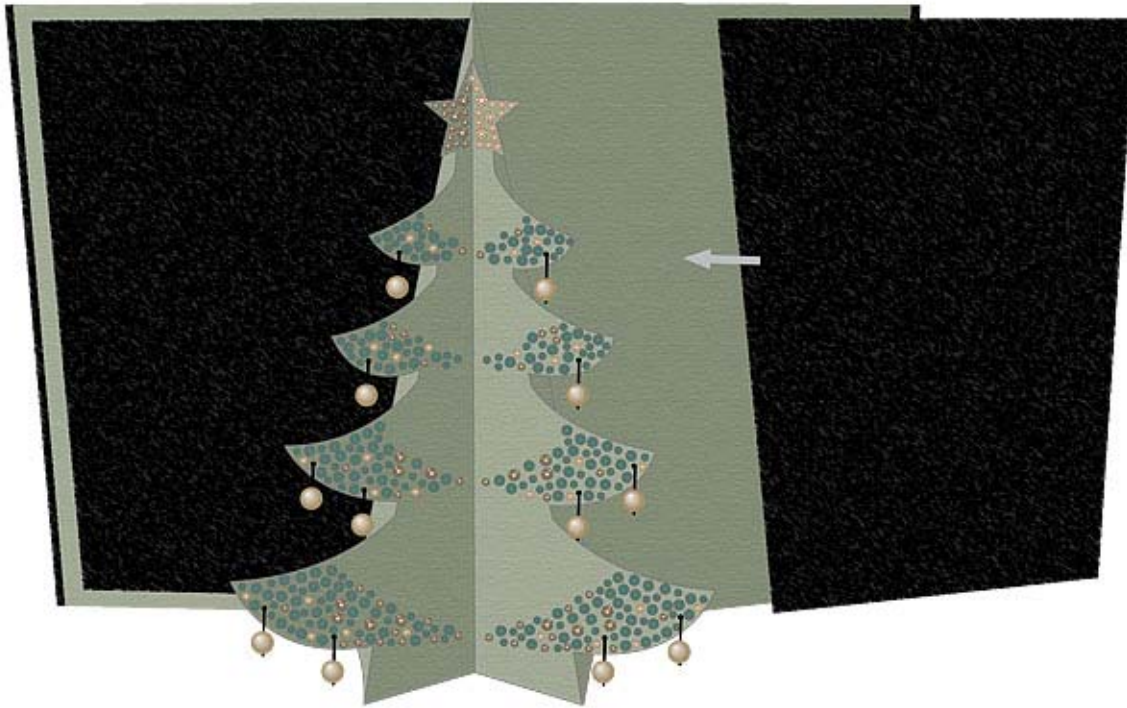
STEP 12



1:2



STEP 13



STEP 14



Repeat step 8

CREATE YOUR STYLE with CRYSTALLIZED™ – *Swarovski Elements* Design Elements Design Project  
Kirigami Card Christmas Tree

- Step 1: Draw the draft on the transparent paper with the help of a pencil and a ruler as shown in the illustration, the lines should intersect each other at the edges. Red lines indicate the folds that go up and blue lines indicate the folds going down.
- Step 2: Staple the transparent paper on to the cardboard as shown in the illustration.
- Step 3: Using the needle, make a hole through the transparent paper and cardboard at the points where the lines intersect as is shown in the illustration.
- Step 4: Remove the transparent paper from the cardboard; you would be left with the holes on the cardboard.
- Step 5: Draw the lines between the points and make partial cut lines in the places which are supposed to be folded as shown. Do not cut through card board – just cut a bit of surface area where red and blue lines are in illustration so that part is easier to fold. Then Fold the parts as shown in illustration.
- Step 6: Cut out the rest of the pattern as shown in the illustration (Be careful not to cut out where red and blue lines are!).
- Step 7: Pin down holes with a needle as shown in the illustration.
- Step 8 – 9: Apply CRYSTALLIZED™ Crystal-it on the Christmas tree as shown in the illustrations in step 8 and 9. Apply 2 and 3 mm crystals in Emerald, Crystal Golden Shadow and Crystal Dorado.
- Step 10: Cut 12 pieces of wire each 3.5 cm long and bend a 90° angle at 1.5 cm. Slide in CRYSTALLIZED™ Crystal Pearls article 5810 on the longer side of the wire and form a hook with the round nose pliers as shown in the illustration.
- Step 11: Insert the wire into one of the holes of the tree and close the hook. Cut the wire short after the bend as shown in the illustration. Repeat this for all the other holes.
- Step 12: Glue the black cardboard onto the Christmas card tree pattern.
- Step 13: Glue two black card board pieces onto green card board behind tree as shown in the illustration.
- Step 14: Apply CRYSTALLIZED™ Crystal- its onto black card board.