



DESIGN PROJECT

BRACELET

"DOME BEAD"

DESIGN PROJECT BRACELET "DOME BEAD"



Swarovski crystals

Article	Product Group	Article No.	Amount	Size	Color	Color Code
	Beads	5541	3 pcs.	11 mm	Amethyst	204
	Beads	5541	1 pc.	15 mm	Crystal Bronze Shade	001 BRSH
	Beads	5542	2 pcs.	8 mm	Dark Indigo	288
	Cupchains	27000S240 OC/ 1088	15 cm	SS24	Amethyst/Gold	204

Supplies & Tools

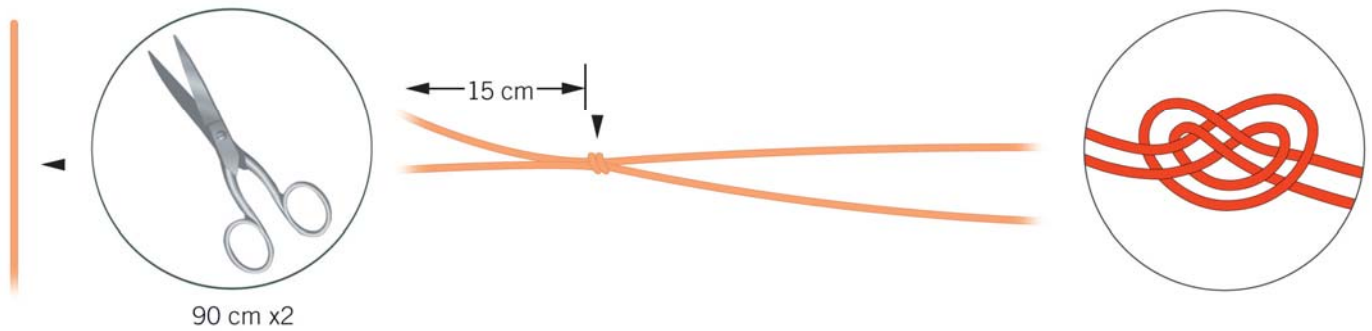
Supplies
Two part adhesive glue
Waxed cord, beige, Ø 1 mm, 1.8 m
Waxed cord, blue, Ø 1 mm, 0.5 m

Tools
Ruler
Scissors

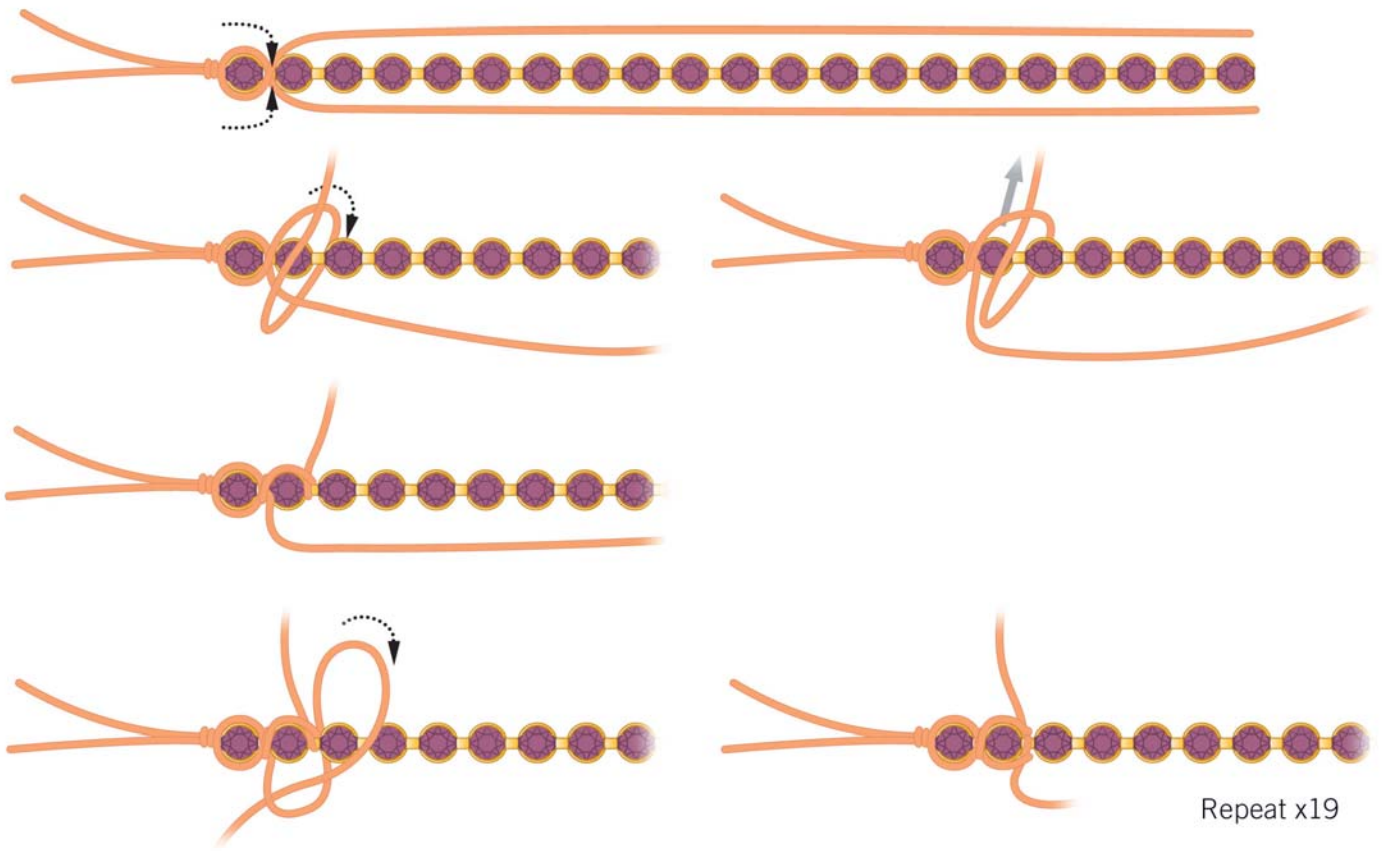
Level of design: BEGINNER

Have also a look at the **text instructions** at the last page!

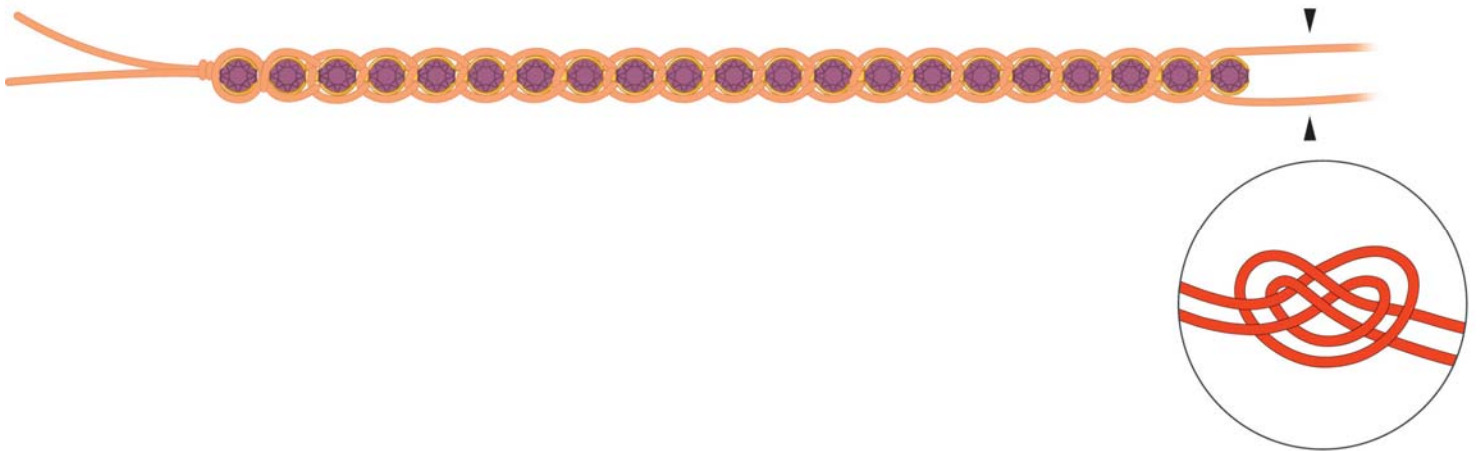
STEP 1



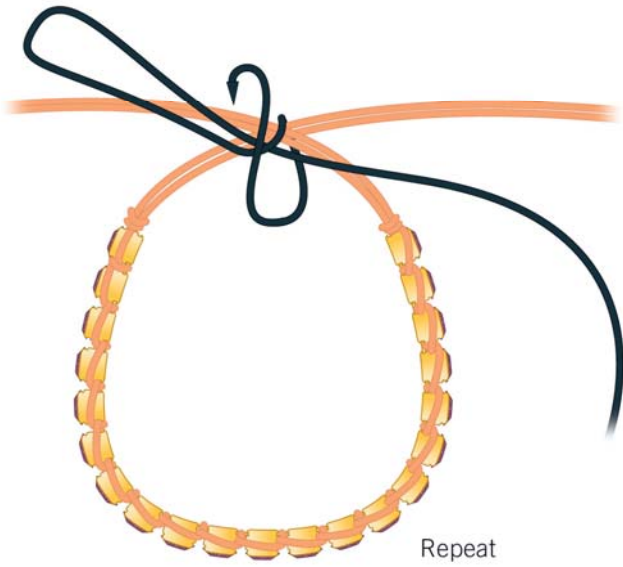
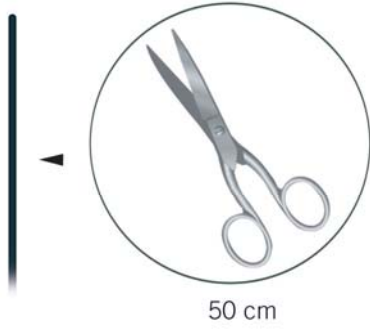
STEP 2



STEP 3

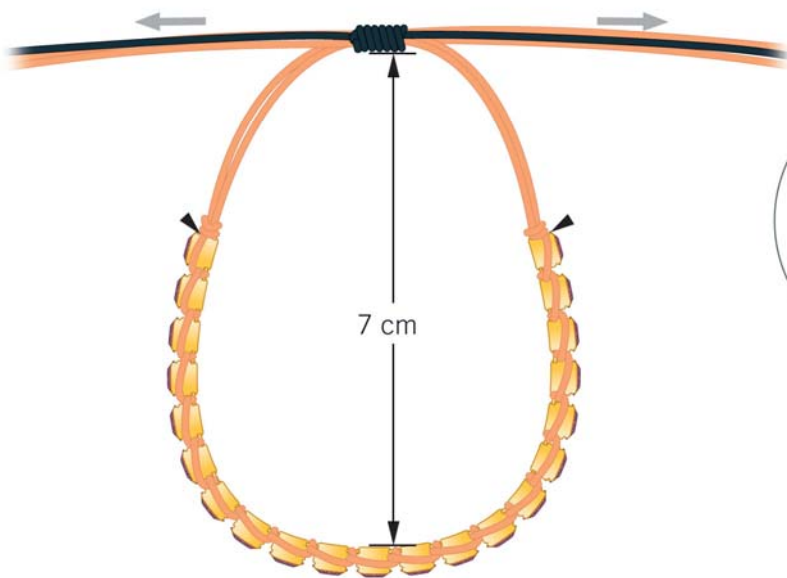


STEP 4

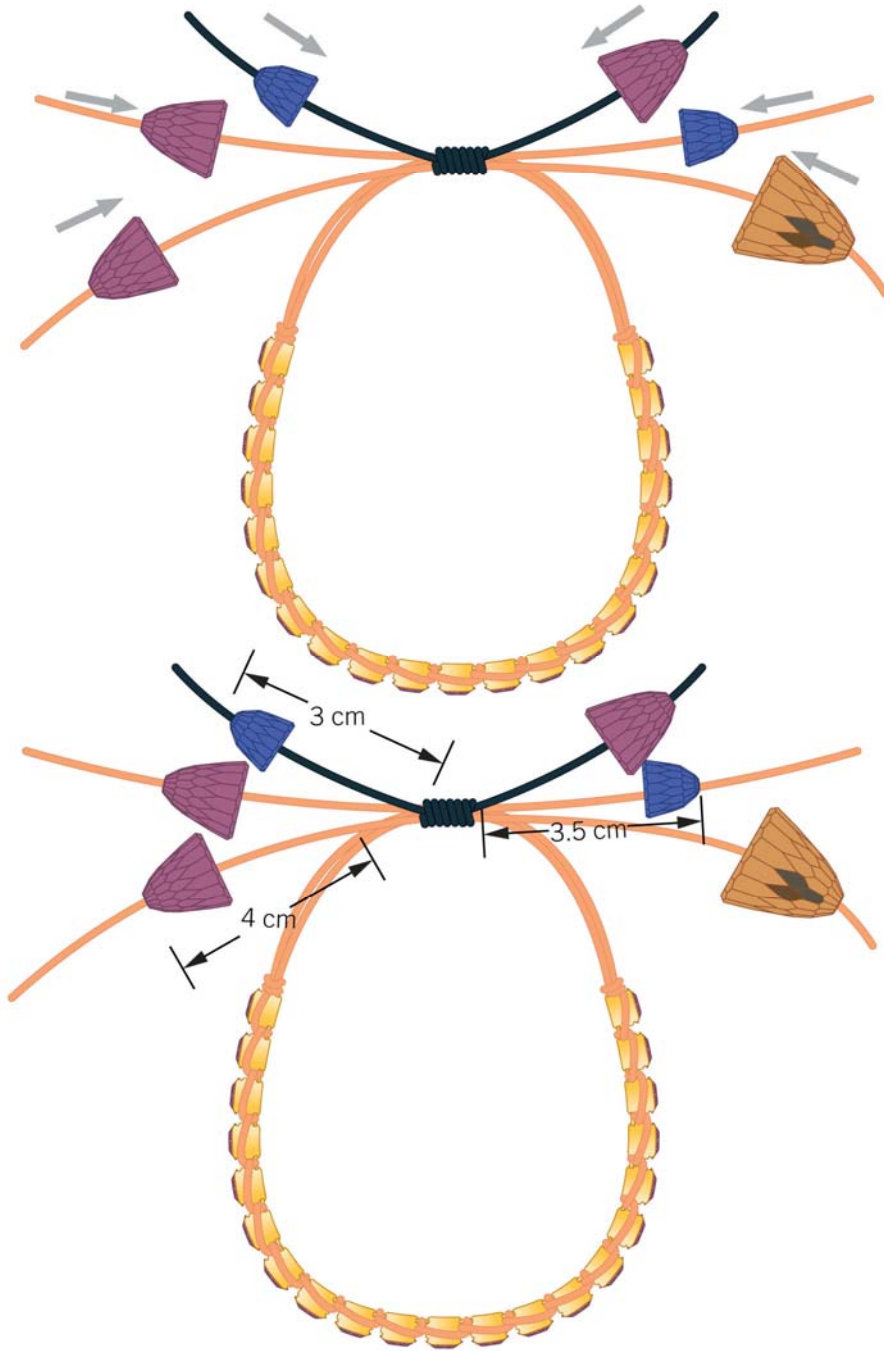


Repeat

STEP 5



STEP 6





DESIGN PROJECT BRACELET "DOME BEAD"



- STEP 1: Cut two 90cm long pieces of beige waxed cords. Tie a double knot with both of them leaving an excess length of 15cm.
- STEP 2: Use a 15cm long Swarovski Cupchain art. 27000S240 OC/1088 in Amethyst with gold casing containing 21 crystals. Wind the waxed cord around the crystal as shown in the illustrations.
- STEP 3: Tie a double knot at the end of the cupchain.
- STEP 4: Cut 50cm of blue waxed cord and fold in half. Form the cupchain into a bracelet shape and tie the blue wax cord around the beige wax cord as shown in the illustrations.
- STEP 5: Put some glue at both the ends of the Swarovski Cupchain and let it dry. Pull both the ends of the beige cord to get a bracelet with 7cm diameter.
- STEP 6: Slide all the Swarovski crystals listed in the material list onto the free ends. Knot them as shown in the illustration and cut off some the excess thread.