



**HAIRCOMB**  
SPARKLING FLOWER

# "HAIRCOMB SPARKLING FLOWER"



## SWAROVSKI ELEMENTS

Article	Product Group	Article No.	Amount	Size	Color	Color Code
	Beads	5000	71 pcs.	2 mm	Black Diamond	215
	Beads	5000	55 pcs.	2 mm	Crystal Silver Shade	001 SSHA
	Beads	5000	63 pcs.	2 mm	White Opal	234
	Beads	5040	1 pc.	6 mm	Crystal Moonlight	001 MOL
	Beads	5040	1 pc.	6 mm	Crystal Silver Night	001 SINI
	Beads	5040	1 pc.	6 mm	Crystal Silver Shade	001 SSHA

## Supplies & Tools

Supplies
1x Headpin, silver, 3.5x3.5cm
Nylon thread, transparent, Ø 0.2mm, 1.8 m
Tools
Chain nose pliers
Lighter
Scissors
Tweezers

Level of design: BEGINNER

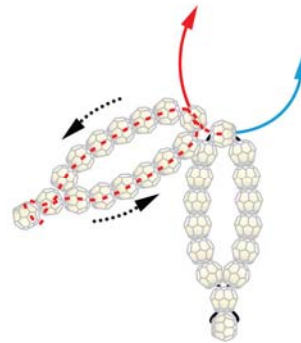
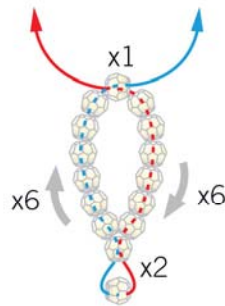
### STEP 1



0.2 mm



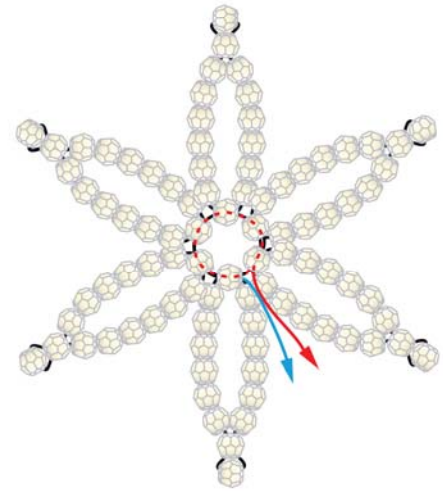
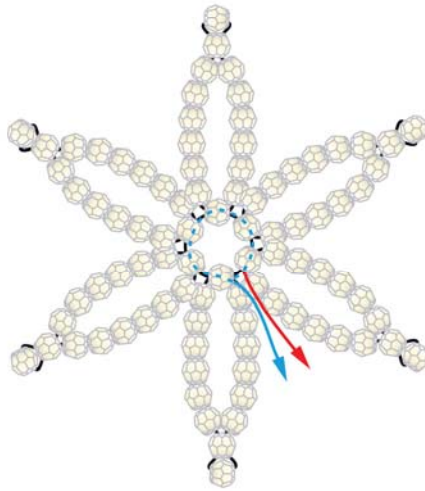
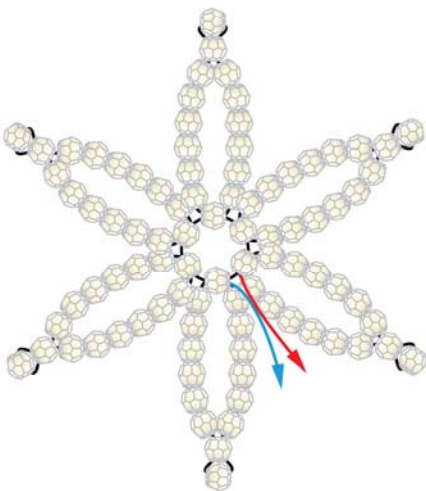
60 cm x3



Repeat

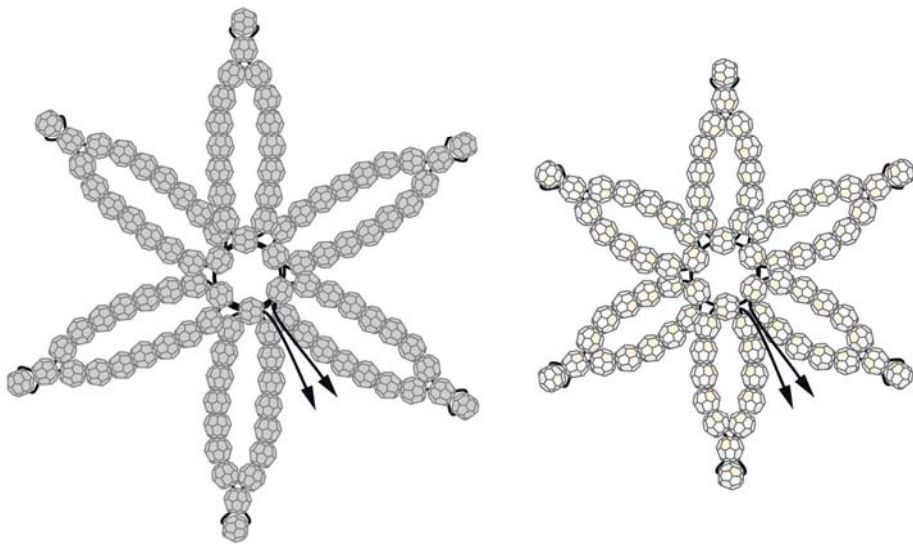
Scale 2:1

### STEP 2

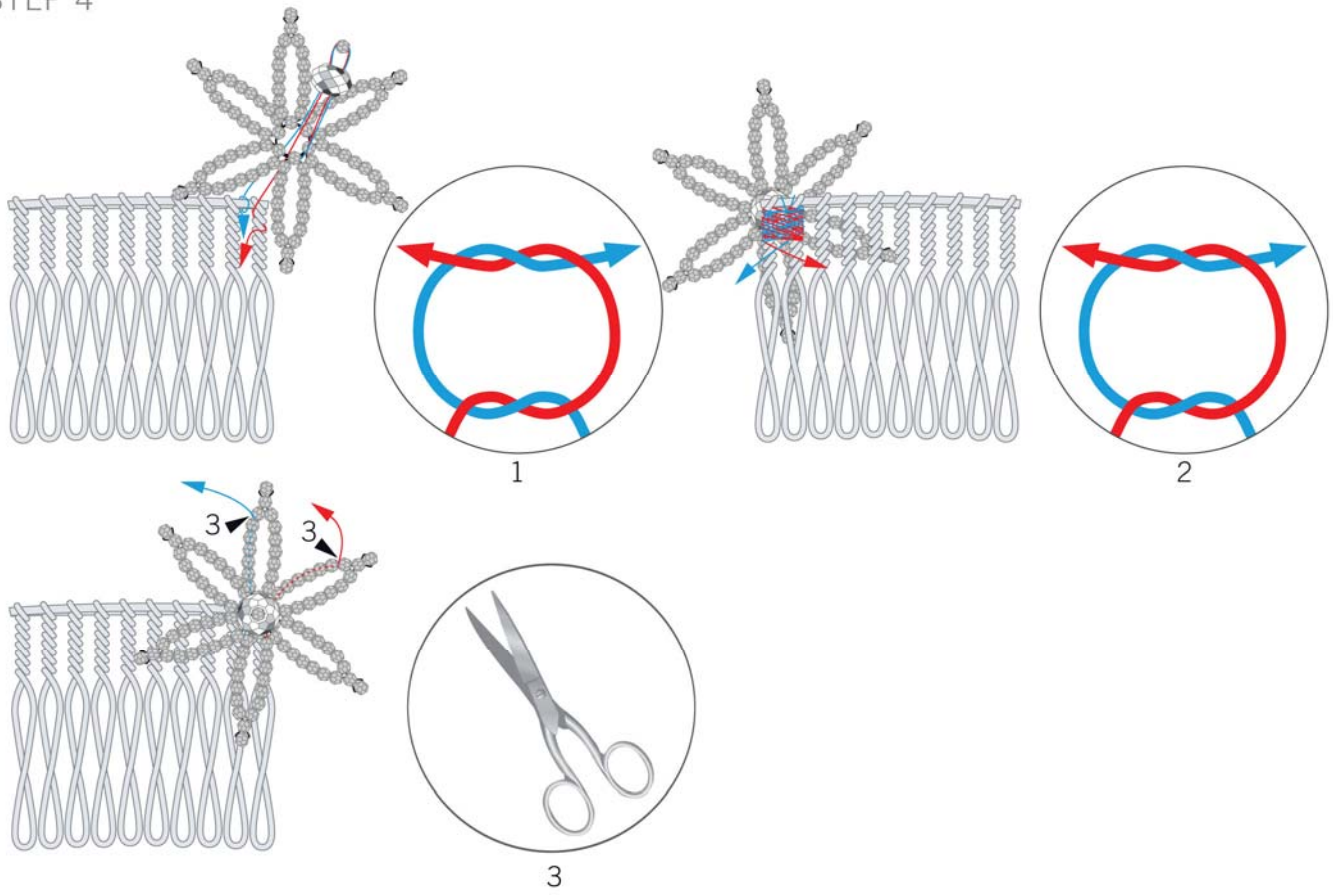


### STEP 3

Repeat steps 1 - 2 x2:

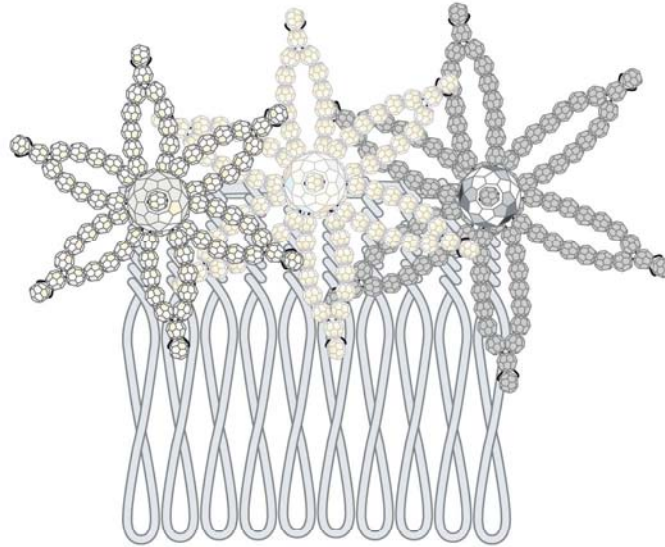


### STEP 4





Repeat step 4 x2:



- STEP 1: Cut 3x 60cm of 0.2mm nylon threads and Bead in a Swarovski Bead article 5000 2mm White Opal. Now slide one more of this Bead and slide both thread ends through it; now slide 6 more Beads through each thread end and cross over in a new Bead. Keep adding Beads in the same way to get five more petal shaped structures to this flower shape as is visible in our illustrations for this step.
- STEP 2: Now with both the thread ends go through all the Beads in the inner structure but don't cut off thread ends as is visible in our illustrations.
- STEP 3: Repeat steps 1 – 2 two more times to get a Black Diamond and a Crystal Silver Shade structure. Use 7 Beads instead of 6 in the Black diamond structure and 5 instead of 6 in the Crystal Silver Shade structure.
- STEP 4: With the leftover thread ends from the Black Diamond structure go through Swarovski Bead article 5040 6mm Crystal Silver Night and then through Swarovski Bead article 5000 2mm Black Diamond and now again through the 5040 6mm Crystal Silver Night Bead and in through the central space of this structure as is shown in the illustrations in this step. Now wrap these thread ends around the hair pin and tie a double knot. Now wrap again several times around the hairpin and make another double knot and now slide these thread ends through the some of the crystals in the structure and cut off the thread ends as is done in the illustrations of this step.
- STEP 5: Repeat step 4 two more times to fix the other two flower structures on to the hairpin as shown in the illustration in this step. Use Swarovski Bead article 5040 6mm Crystal Moonlight and 5000 2 mm White Opal Beads for the canter portion of the Crystal Moonlight flower structure and Swarovski Bead article 5040 6mm Crystal Silver Shade and 5000 2mm Crystal Silver Shade for the Silver Shade flower structure.