

CREATE  
YOUR STYLE  
with SWAROVSKI ELEMENTS

DESIGN PROJECT

# EASTER NEST HAIR TIE



# EASTER NEST HAIR TIE



## SWAROVSKI ELEMENTS

## Supplies & Tools

### Version 1

Article	Product Group	Article No.	Amount	Size	Color	Color Code
	Fancy Stones	4137	6 pcs.	15x11 mm	Crystal Sahara	001 SAH
	Beads	5531	4 pcs.	18mm	Crystal Red Magma	001 REDM
	Beads	5754	4 pcs.	8mm	Air Blue Opal	285

### Supplies

Elastic strap flat, 4 mm, beige, 32 cm  
 Embroidery yarn, bordeaux, 3 m  
 Embroidery yarn, green, 1.5 m  
 Embroidery yarn, light blue, 1.5 m  
 Embroidery yarn, yellow, 3 m

### Tools

Embroidery needle  
 Pins  
 Ruler  
 Scissors

### Version 2

Article	Product Group	Article No.	Amount	Size	Color	Color Code
	Beads	5139	6 pcs.	12.5mm	Light Topaz	226
	Pendants	6202	4 pcs.	10.3x10 mm	Air Blue Opal	285
	Pendants	6906	4 pcs.	20 mm	Olivine	228

### Supplies

Elastic strap flat, 4 mm, beige, 32 cm  
 Embroidery yarn, olive, 3 m  
 Embroidery yarn, yellow, 1.5 m  
 Embroidery yarn, light blue, 1.5 m  
 Embroidery yarn, mid blue, 3 m

### Tools

Embroidery needle  
 Pins  
 Ruler  
 Scissors

## STEP 1



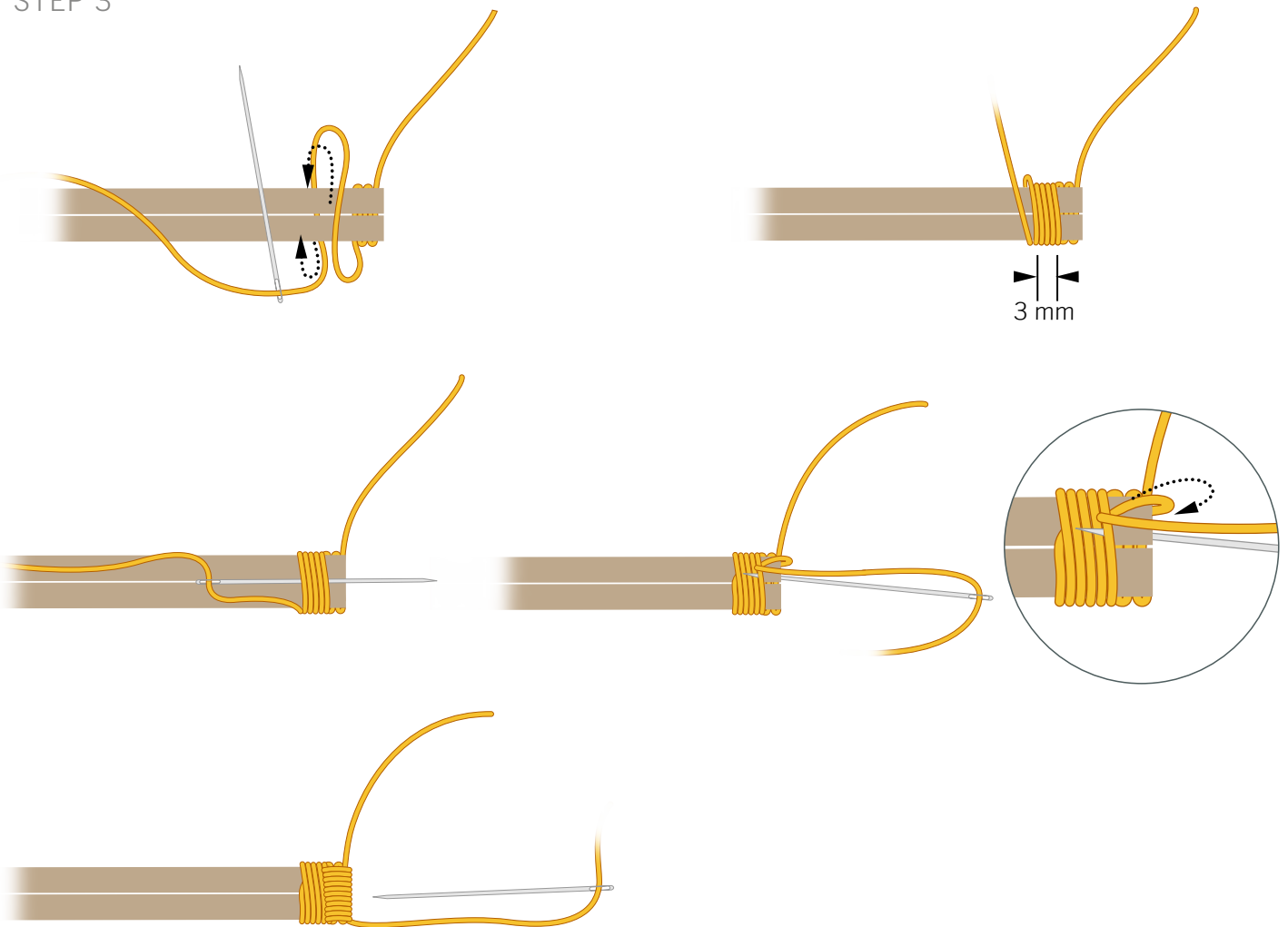
16 cm x2



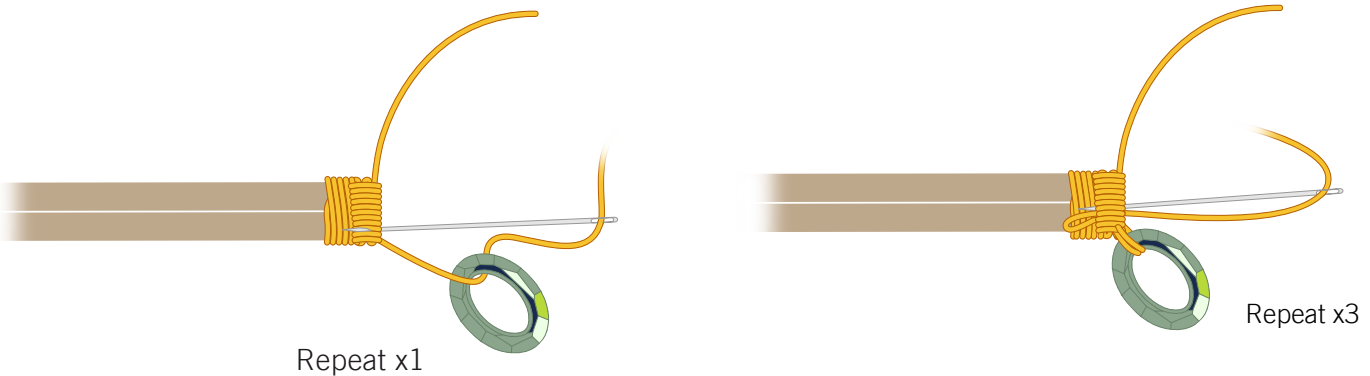
STEP 2

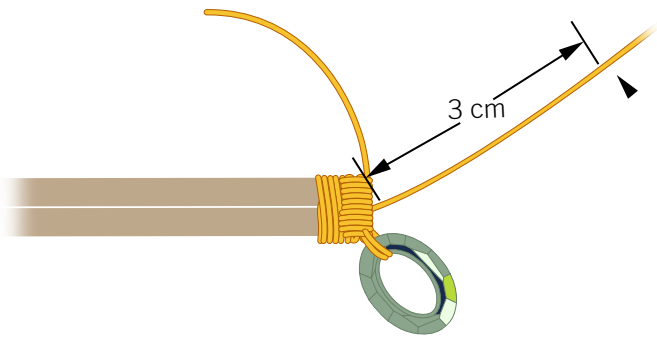


STEP 3

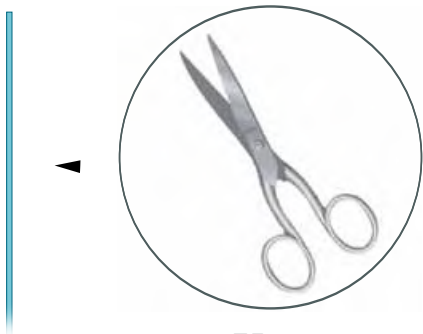


STEP 4



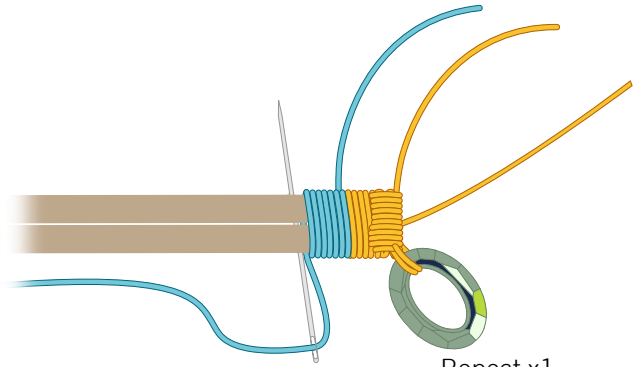
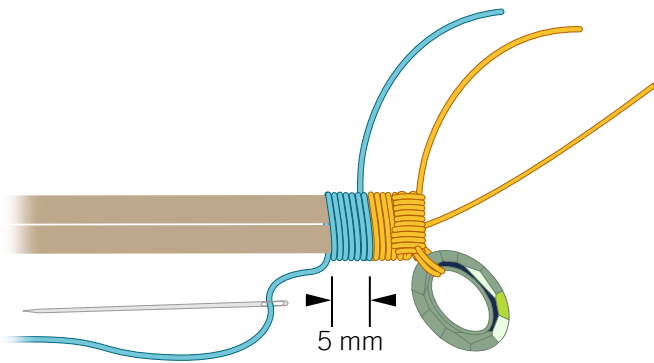
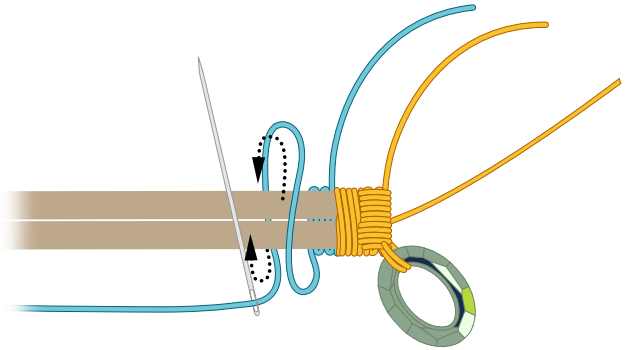


STEP 5

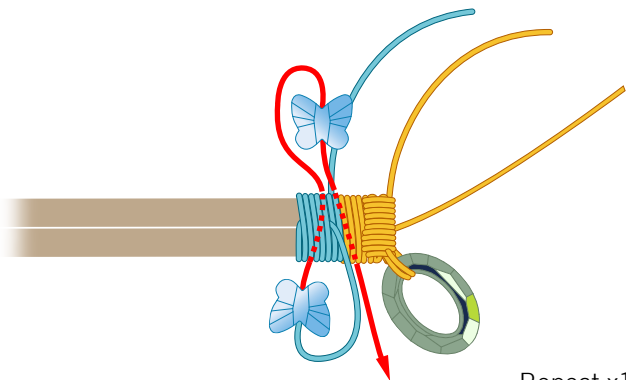
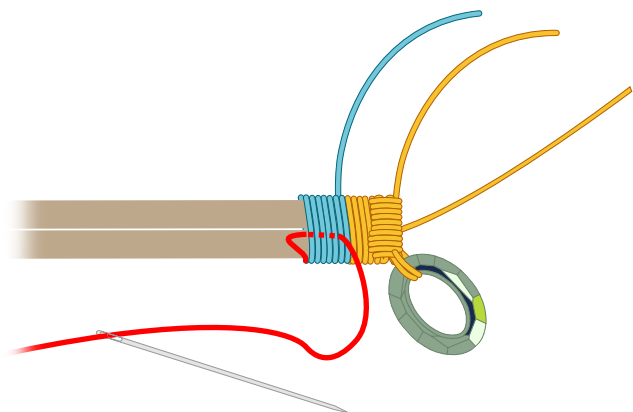


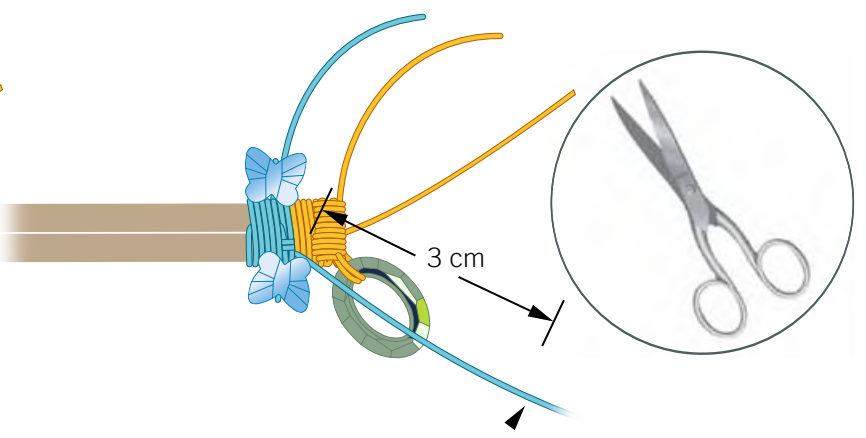
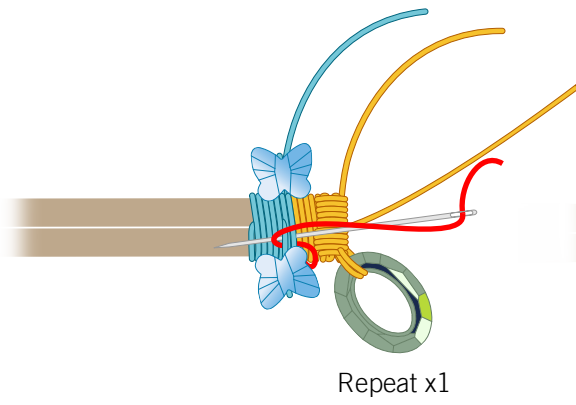
75 cm

Repeat step 2:

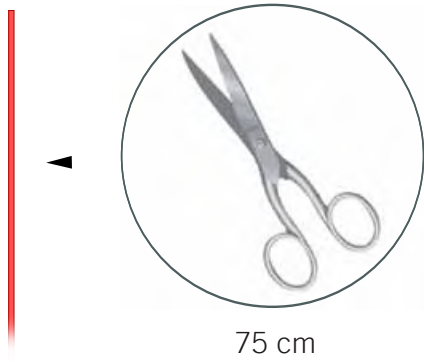


STEP 6

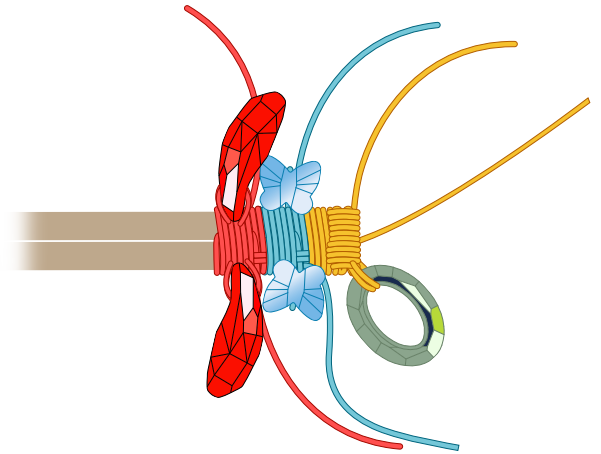




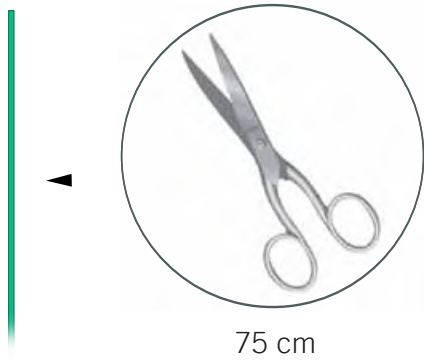
STEP 7



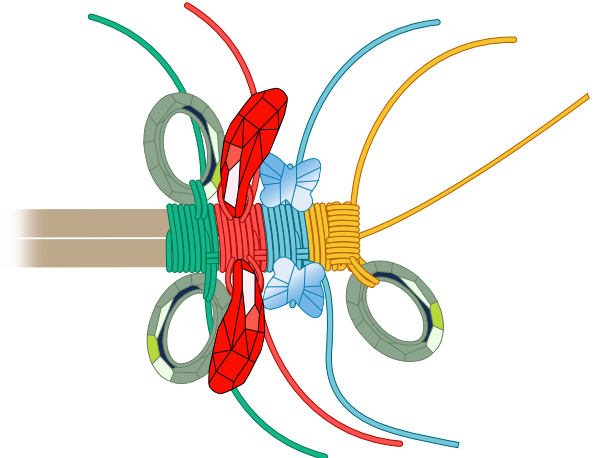
Repeat steps 5 - 6:



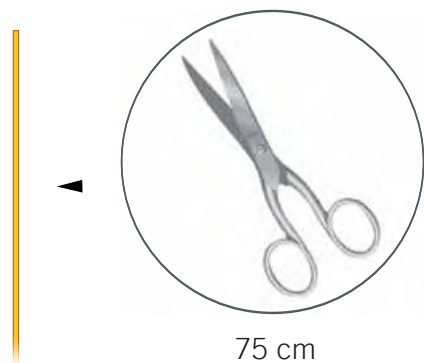
STEP 8



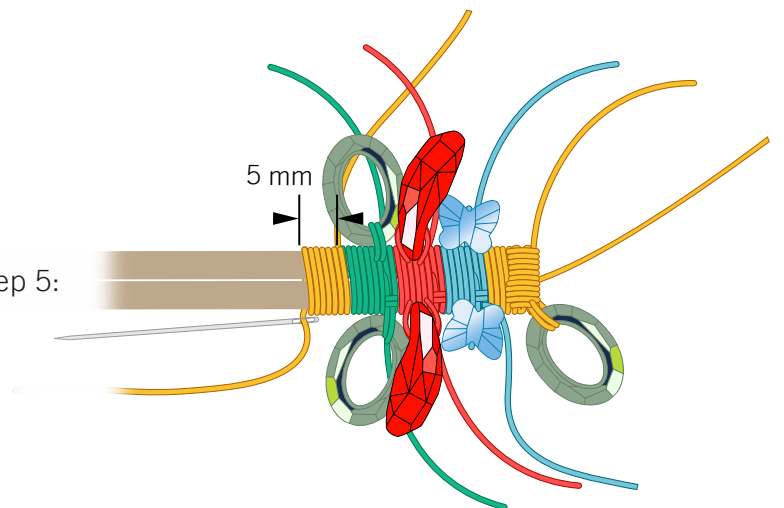
Repeat steps 5 - 6:

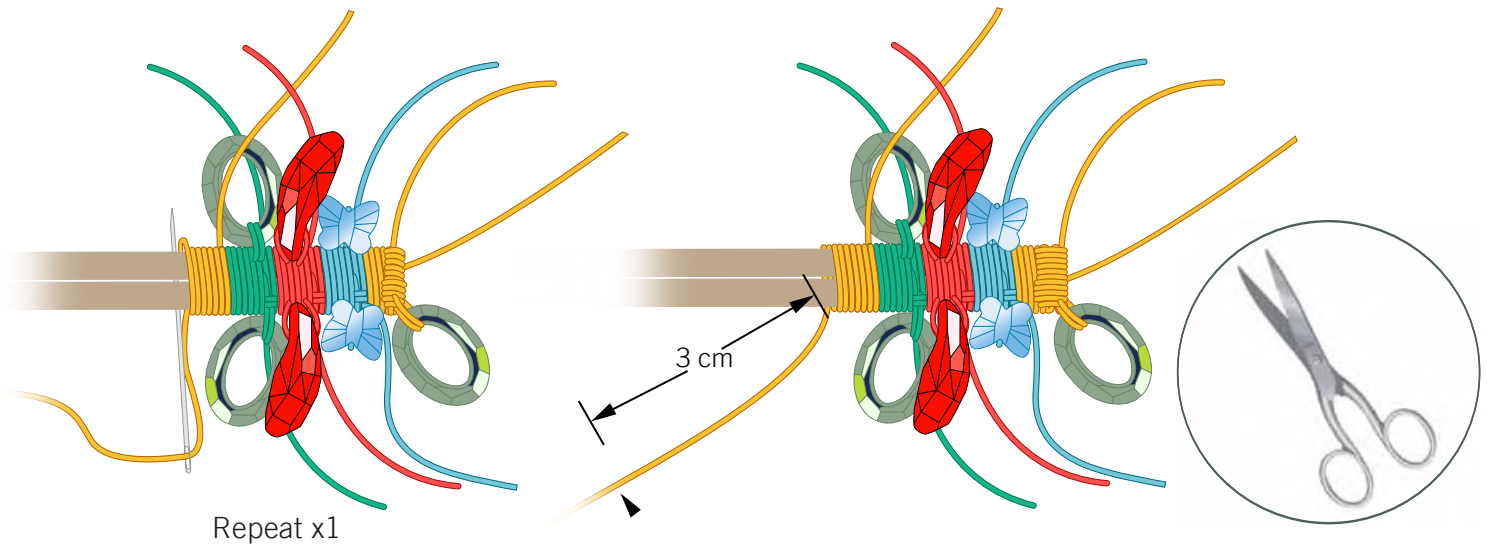


STEP 9

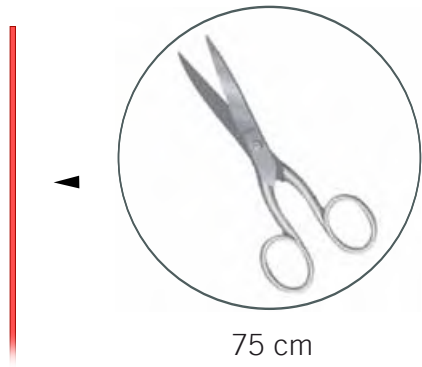


Repeat step 5:

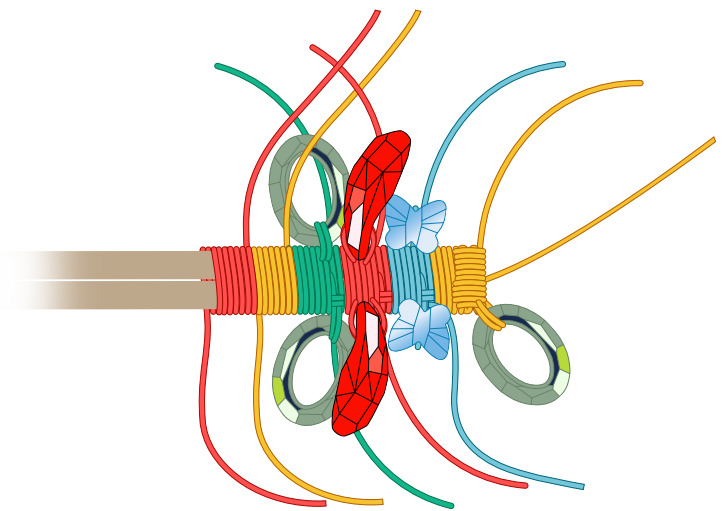




STEP 10



Repeat step 9:



STEP 11

Repeat steps 2 - 10:



