



ALICE NECKLACE



INSTRUCTION ALICE NECKLACE



SWAROVSKI ELEMENTS

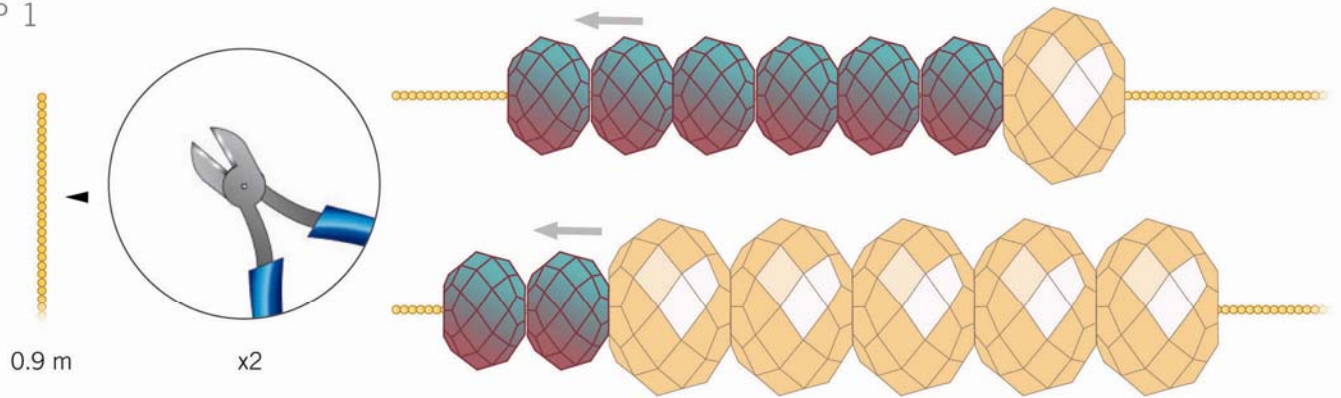
Article	Product Group	Article No.	Amount	Size	Color	Color Code
	Beads	5040	8 pcs.	12 mm	Burgundy Blue Zircon Blend	723
	Beads	5040	6 pcs.	18 mm	Crystal Golden Shadow	001 GSHA

Supplies & Tools

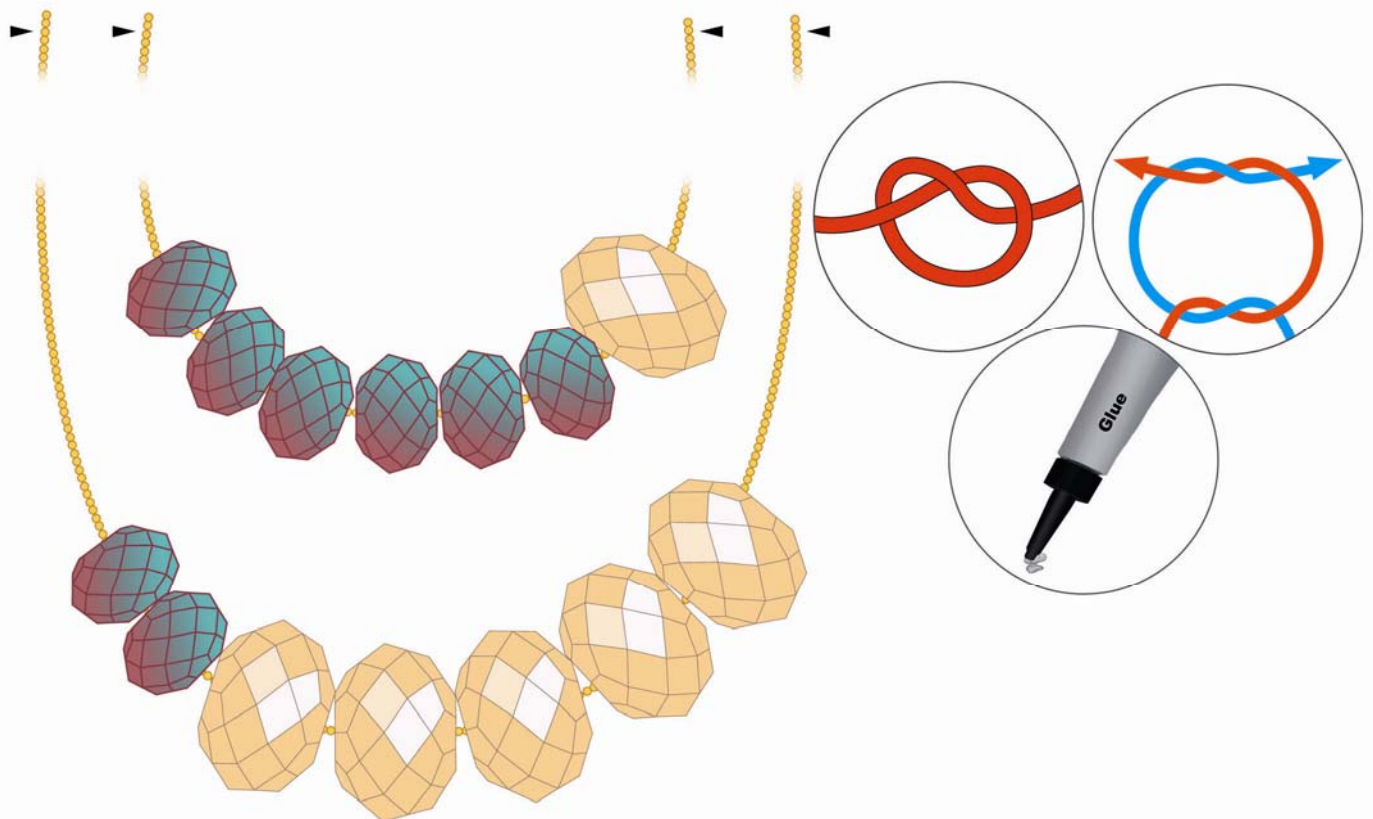
Supplies
Ball chain, gold, Ø 1.2 mm, 1.8 m
Tools
Glue
Side cutter

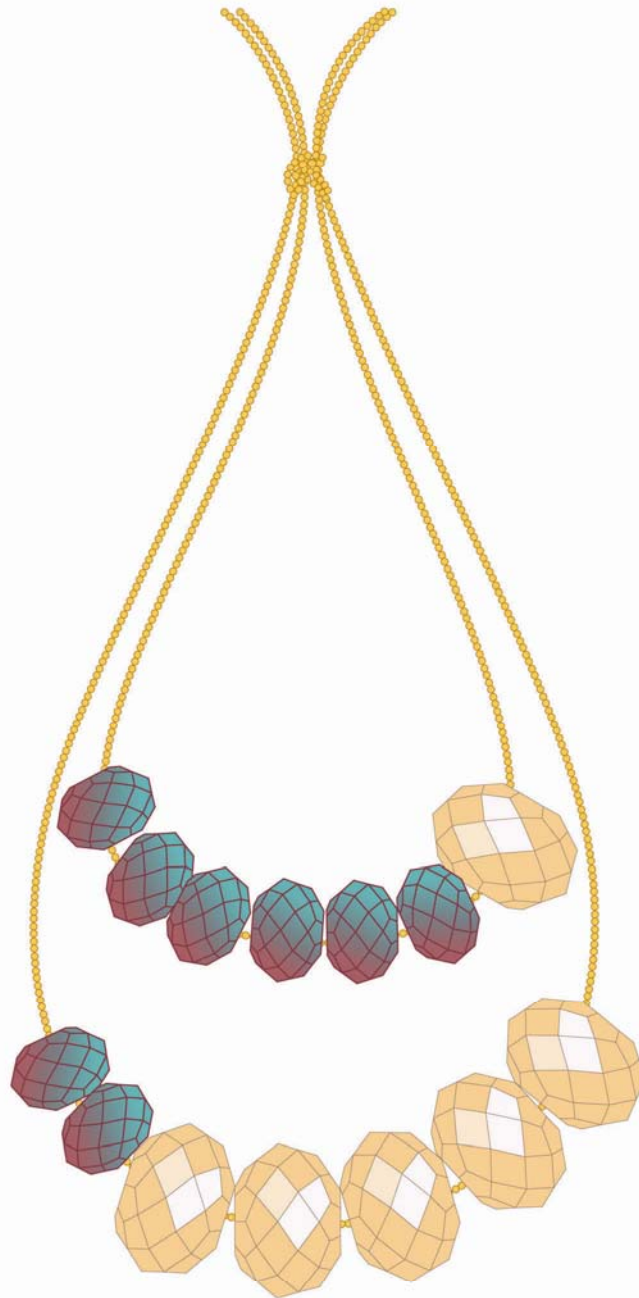
Level of design: BEGINNER

STEP 1



STEP 2





STEP 1: Cut two 90cm piece of ball chain. String on six Swarovski Beads art. 5040 in 12mm Burgundy Blue Zircon Blend and one 18mm Crystal Golden Shadow and set aside. String on two Beads art. 5040 in 12mm Burgundy Blue Zircon Blend and five 18mm Crystal Golden Shadow onto the remaining piece of chain.

STEP 2: Lay both strands out so that one is shorter than the other and knot the ends together as shown. Secure the knot with glue.